

General Information

Gene Name Synonym

Protein-tyrosine phosphatase epsilon; R-PTP-epsilon; EC 3.1.3.48

Protein Construction

A DNA sequence encoding the human PTPRE (XP_047281532.1) 384-733 aa was fused with the polyhistidine tag

Organism

Human

Expression Host

E. coli

QC Testing

Activity

Not tested.

Endotoxin

Please contact the lab for more information.

Stability

Store for up to 12 months at -20°C to -80°C as lyophilized powder.

Formulation

Protein lyophilized in sterile PBS (58 mM Na₂HPO₄, 17 mM NaH₂PO₄, 68 mM NaCl, 300 mM Imidazole, pH 8.0). Trehalose (5-8%) and mannitol (5-8%) protectants were added before

lyophilization.

Usage Guide

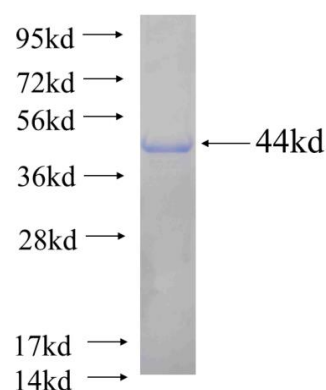
Storage

Store it under sterile conditions at -20°C to -80°C. It is recommended that the protein be aliquoted for optimal storage. Avoid repeated freeze-thaw cycles.

Reconstitution

Reconstitute at 0.25 µg/µl in sterile water for short-term storage. Reconstitution with 50% glycerol solution is recommended for longer term storage (see Stability and Storage for more details). If a different concentration is needed for your purposes please adjust the reconstitution volume as required (please note: the ion concentration of the final solution will vary according to the volume used). Note: Centrifuge vial before opening. When reconstituting, gently pipet and wash down the sides of the vial to ensure full recovery of the protein into solution.

SDS-PAGE



Recombinant human PTPRE SDS-PAGE