

Anti-LILRB2 antibody



Catalog Number: 141750

Product name

Anti-LILRB2 antibody

Immunogen

[Human LILRB2 / ILT4 / LIR-2 \(His Tag\) recombinant protein](#)

Specificity

Human LILRB2/ILT4/LIR-2

Antibody description

Mouse Monoclonal to Human LILRB2

Preparation

This antibody was produced from a hybridoma resulting from the fusion of a mouse myeloma with B cells obtained from a mouse immunized with purified, recombinant Human LILRB2/ILT4/LIR-2 and conjugated with APC under optimum conditions, the unreacted APC was removed.

Formulation

Aqueous solution containing 0.5% BSA and 0.09% sodium azide

Storage

This antibody is stable for 12 months from date of receipt when stored at 2°C-8°C. Protected from

prolonged exposure to light. Do not freeze ! Sodium azide is toxic to cells and should be disposed of properly. Flush with large volumes of water during disposal.

Clonality

Monoclonal

Ig Type

Mouse IgG2b

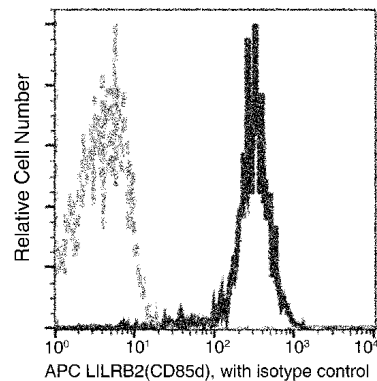
Applications

FCM

Dilutions

FCM

Validations



Human LILRB2/ILT4/LIR-2 Flow Cytometry (FC) 15359