

ATP5A1 antibody



Catalog Number: 108350

Product name

ATP5A1 antibody

Specificity

Human, Mouse, Rat; other species not tested.

Antibody description

ATP5A1 Rabbit Polyclonal antibody. Positive WB detected in multi-cells/tissue, HEK-293 cells, HeLa cells, HepG2 cells, Jurkat cells, K-562 cells, MCF7 cells, mouse heart tissue, mouse liver tissue, PC-3 cells, rat heart tissue, Y79 cells. Positive IHC detected in human liver tissue, human kidney tissue. Positive IF detected in HepG2 cells, HeLa cells. Observed molecular weight by Western-blot: 50-55kd

Preparation

This antibody was obtained by immunization of ATP5A1 recombinant protein (Accession Number: NM_004046). Purification method: Antigen affinity purified.

Formulation

PBS with 0.02% sodium azide and 50% glycerol pH 7.3.

Storage

Store at -20°C. DO NOT ALIQUOT

Clonality

Polyclonal

Ig Type

Rabbit IgG

Applications

ELISA, IHC, WB, IF

Dilutions

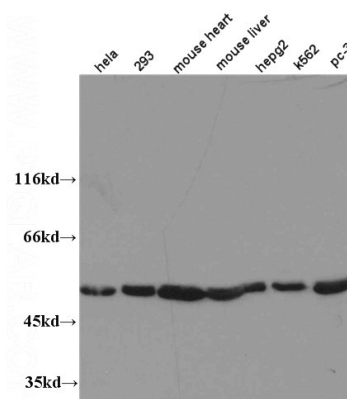
Recommended Dilution:

WB: 1:500-1:5000

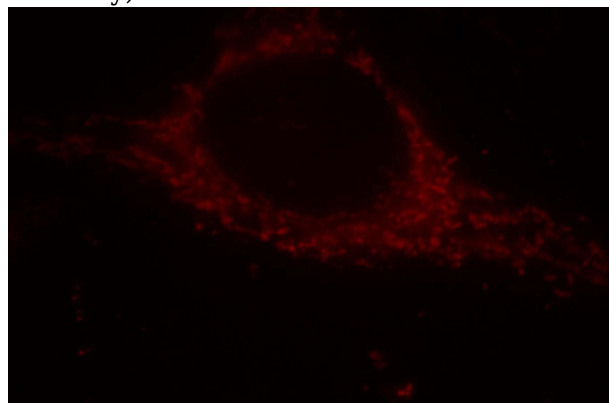
IHC: 1:20-1:200

IF: 1:10-1:100

Validations



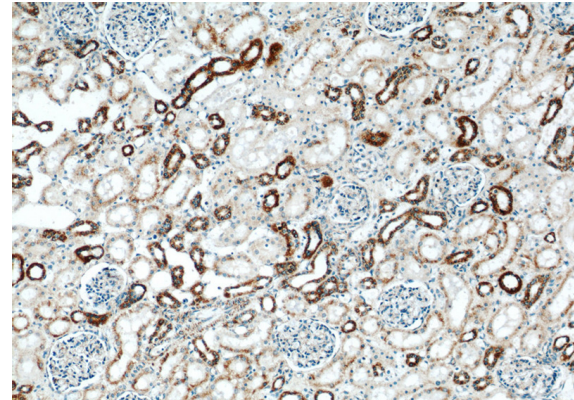
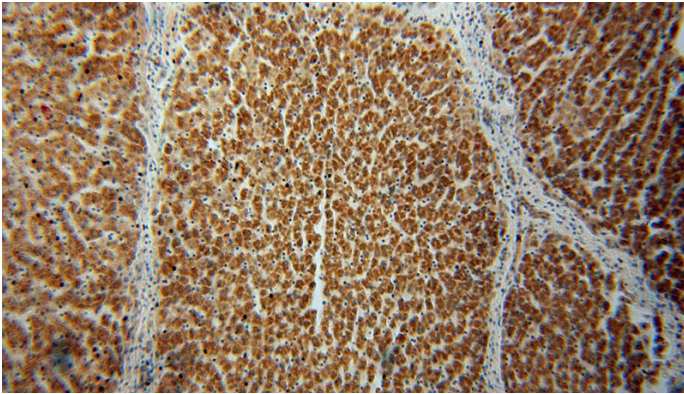
WB results of Catalog No:108350 (anti-ATP5A1 antibody).



Immunofluorescent analysis of HepG2 cells, using ATP5A1 antibody Catalog No:108350 at 1:25 dilution and Rhodamine-labeled goat anti-rabbit IgG (red).

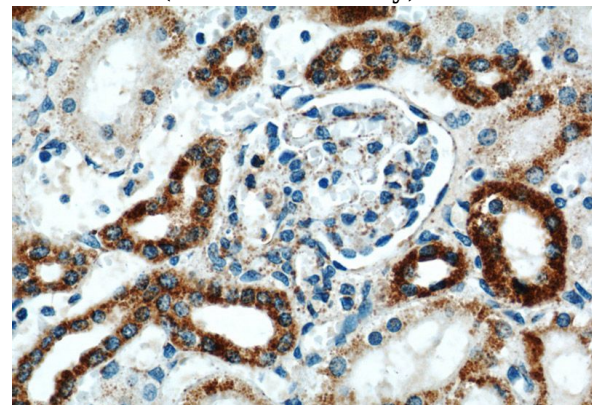
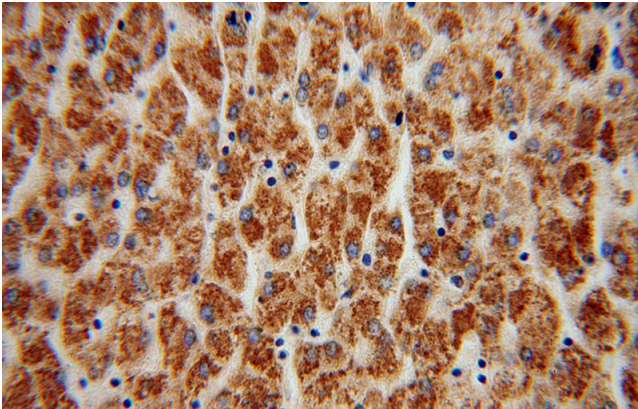
ATP5A1 antibody

Catalog Number: 108350



Immunohistochemical of paraffin-embedded human liver using Catalog No:108350(ATP5A1 antibody) at dilution of 1:100 (under 10x lens)

Immunohistochemistry of paraffin-embedded human kidney slide using Catalog No:108350(ATP5A1 Antibody) at dilution of 1:50



Immunohistochemical of paraffin-embedded human liver using Catalog No:108350(ATP5A1 antibody) at dilution of 1:100 (under 40x lens)

Immunohistochemistry of paraffin-embedded human kidney slide using Catalog No:108350(ATP5A1 Antibody) at dilution of 1:50