

# LSM5 antibody



Catalog Number: 112350

---

## Product name

LSM5 antibody

## Specificity

human, mouse; other species not tested.

## Antibody description

LSM5 Rabbit Polyclonal antibody. Positive WB detected in HeLa cells, HL-60 cells, human placenta tissue, mouse ovary tissue. Observed molecular weight by Western-blot: 10 kDa

## Preparation

This antibody was obtained by immunization of LSM5 recombinant protein (Accession Number: NM\_012322). Purification method: Antigen affinity purified.

## Formulation

PBS with 0.1% sodium azide and 50% glycerol pH 7.3.

## Storage

Store at -20°C. DO NOT ALIQUOT

## Clonality

Polyclonal

## Ig Type

Rabbit IgG

## Applications

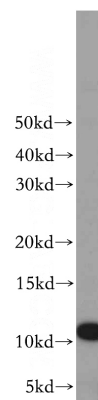
ELISA, WB

## Dilutions

Recommended Dilution:

WB: 1:200-1:1000

## Validations



HeLa cells were subjected to SDS PAGE followed by western blot with Catalog No:112350(LSM5 antibody) at dilution of 1:100