

HINFP antibody



Catalog Number: 111350

Product name

HINFP antibody

Specificity

Human, Mouse, Rat; other species not tested.

Antibody description

HINFP Rabbit Polyclonal antibody. Positive IF detected in HeLa cells, L02 cells. Positive WB detected in human liver tissue, L02 cells. Observed molecular weight by Western-blot: 60 kDa

Preparation

This antibody was obtained by immunization of HINFP recombinant protein (Accession Number: NM_015517). Purification method: Antigen affinity purified.

Formulation

PBS with 0.1% sodium azide and 50% glycerol pH 7.3.

Storage

Store at -20°C. DO NOT ALIQUOT

Clonality

Polyclonal

Ig Type

Rabbit IgG

Applications

ELISA, WB, IF

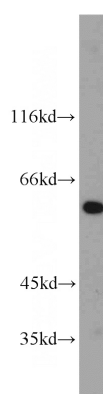
Dilutions

Recommended Dilution:

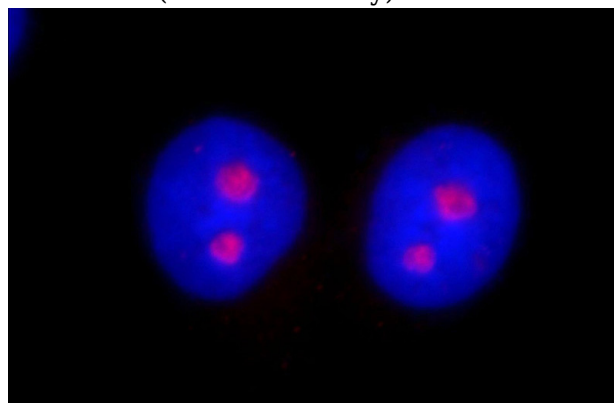
WB: 1:200-1:1000

IF: 1:10-1:100

Validations



human liver tissue were subjected to SDS PAGE followed by western blot with Catalog No:111350(HINFP antibody) at dilution of 1:300



Immunofluorescent analysis of HeLa cells, using HINFP antibody Catalog No: at 1:25 dilution and Rhodamine-labeled goat anti-rabbit IgG (red). Blue pseudocolor = DAPI (fluorescent DNA dye).