

# CXorf26 antibody

Catalog Number: 109650

## Product name

CXorf26 antibody

IHC: 1:20-1:200

IF: 1:20-1:200

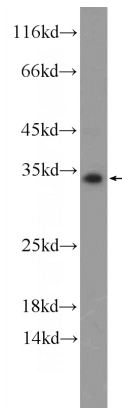
## Specificity

Human, Mouse; other species not tested.

## Validations

## Antibody description

CXorf26 Rabbit Polyclonal antibody. Positive WB detected in A549 cells, HeLa cells, mouse lung tissue. Positive IHC detected in human testis tissue, human kidney tissue. Positive IF detected in HeLa cells. Observed molecular weight by Western-blot: 26-35 kDa



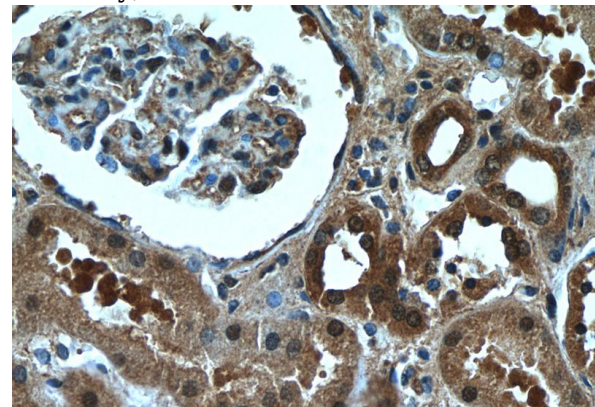
## Preparation

This antibody was obtained by immunization of CXorf26 recombinant protein (Accession Number: NM\_016500). Purification method: Antigen affinity purified.

A549 cells were subjected to SDS PAGE followed by western blot with Catalog No:109650(CXorf26 Antibody) at dilution of 1:300

## Formulation

PBS with 0.1% sodium azide and 50% glycerol pH 7.3.



## Storage

Store at -20°C. DO NOT ALIQUOT

## Clonality

Polyclonal

Immunohistochemistry of paraffin-embedded human kidney tissue slide using Catalog No:109650(CXorf26 Antibody) at dilution of 1:50 (under 40x lens)

## Ig Type

Rabbit IgG

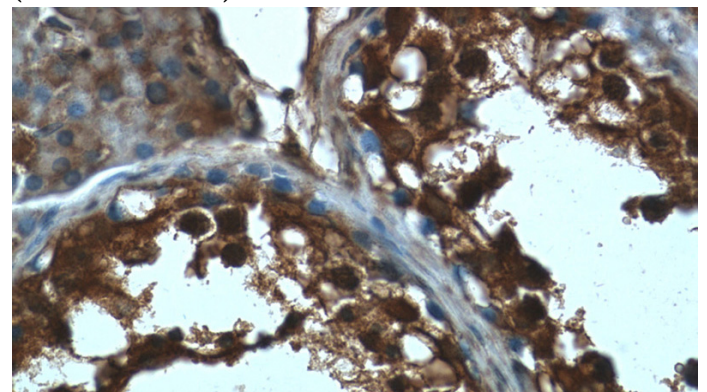
## Applications

ELISA, WB, IF, IHC

## Dilutions

Recommended Dilution:

WB: 1:200-1:1000



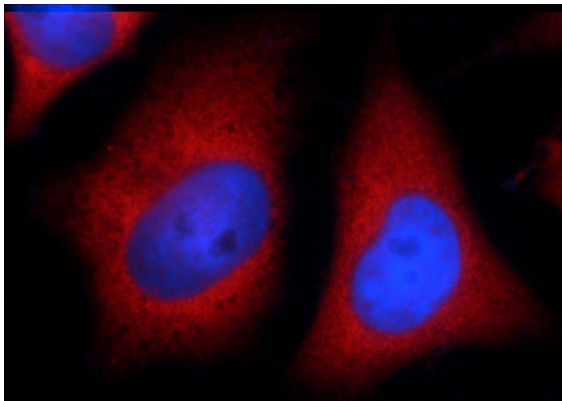
Immunohistochemistry of paraffin-embedded

# CXorf26 antibody

Catalog Number: 109650

---

human testis tissue slide using Catalog No:109650(CXorf26 Antibody) at dilution of 1:50 (under 40x lens)



Immunofluorescent analysis of HeLa cells using Catalog No:109650(CXorf26 Antibody) at dilution of 1:50 and Rhodamine-Goat anti-Rabbit IgG