

# SPRY4 antibody

Catalog Number: 115650

## Product name

SPRY4 antibody

## Specificity

Human; other species not tested.

## Antibody description

SPRY4 Rabbit Polyclonal antibody. Positive WB detected in A375 cells. Positive IHC detected in human cervical cancer tissue, human heart tissue. Observed molecular weight by Western-blot: 35-38 kDa

## Preparation

This antibody was obtained by immunization of SPRY4 recombinant protein (Accession Number: NM\_001293289). Purification method: Antigen Affinity purified.

## Formulation

PBS with 0.02% sodium azide and 50% glycerol pH 7.3.

## Storage

Store at -20°C. DO NOT ALIQUOT

## Clonality

Polyclonal

## Ig Type

Rabbit IgG

## Applications

ELISA, WB, IHC

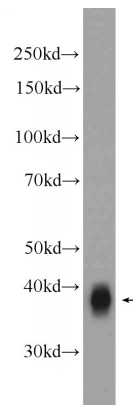
## Dilutions

Recommended Dilution:

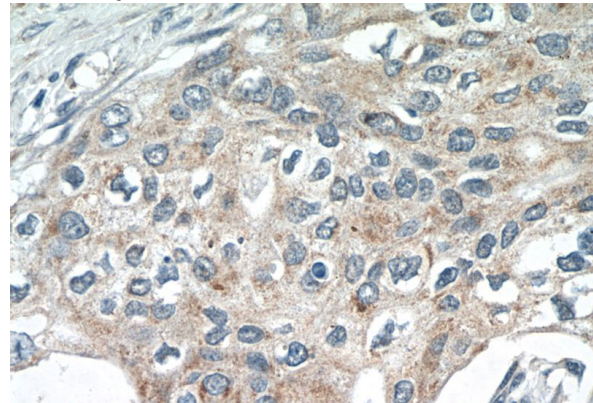
WB: 1:500-1:5000

IHC: 1:20-1:200

## Validations



A375 cells were subjected to SDS PAGE followed by western blot with Catalog No:115650(SPRY4 Antibody) at dilution of 1:1000



Immunohistochemistry of paraffin-embedded human cervical cancer tissue slide using Catalog No:115650(SPRY4 Antibody) at dilution of 1:50 (under 40x lens)