

IKZF3 antibody



Catalog Number: 111650

Product name

IKZF3 antibody

IHC: 1:20-1:200

IF: 1:10-1:100

Specificity

Human, Mouse, Rat; other species not tested.

Antibody description

IKZF3 Rabbit Polyclonal antibody. Positive IF detected in HepG2 cells. Positive IHC detected in human spleen tissue. Positive WB detected in HepG2 cells, Jurkat cells. Observed molecular weight by Western-blot: 58-70kd

Preparation

This antibody was obtained by immunization of IKZF3 recombinant protein (Accession Number: NM_012481). Purification method: Antigen affinity purified.

Formulation

PBS with 0.02% sodium azide and 50% glycerol pH 7.3.

Storage

Store at -20°C. DO NOT ALIQUOT

Clonality

Polyclonal

Ig Type

Rabbit IgG

Applications

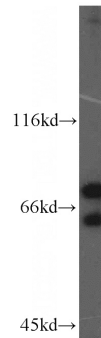
ELISA, WB, IHC, IF

Dilutions

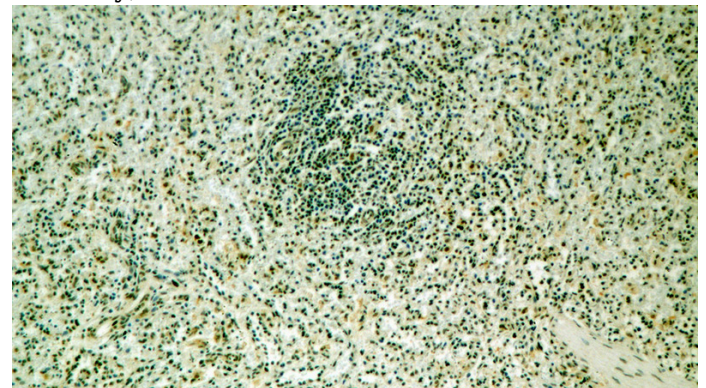
Recommended Dilution:

WB: 1:500-1:5000

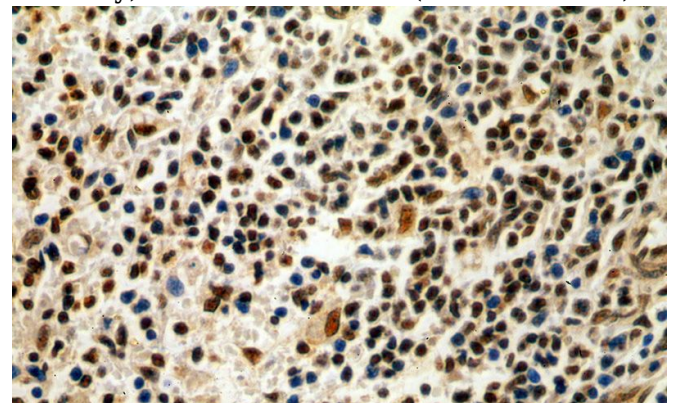
Validations



HepG2 cells were subjected to SDS PAGE followed by western blot with Catalog No:111650(IKZF3 antibody) at dilution of 1:300



Immunohistochemical of paraffin-embedded human spleen using Catalog No:111650(IKZF3 antibody) at dilution of 1:100 (under 10x lens)

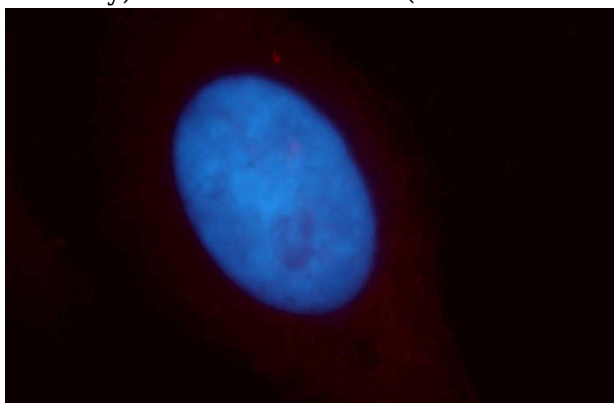


Immunohistochemical of paraffin-embedded human spleen using Catalog No:111650(IKZF3

IKZF3 antibody

Catalog Number: 111650

antibody) at dilution of 1:100 (under 40x lens)



Immunofluorescent analysis of HepG2 cells, using IKZF3 antibody Catalog No:111650 at 1:25 dilution and Rhodamine-labeled goat anti-rabbit IgG (red). Blue pseudocolor = DAPI (fluorescent DNA dye).