

# FHL2 antibody



Catalog Number: 110650

## Product name

FHL2 antibody

WB: 1:1000-1:10000

IP: 1:500-1:5000

## Specificity

Human, Mouse, Rat; other species not tested.

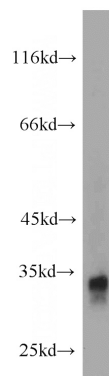
IHC: 1:20-1:200

IF: 1:50-1:500

## Antibody description

FHL2 Rabbit Polyclonal antibody. Positive IF detected in HeLa cells. Positive IHC detected in human heart tissue. Positive IP detected in mouse skeletal muscle tissue. Positive WB detected in mouse ovary tissue, HeLa cells, NIH/3T3 cells. Observed molecular weight by Western-blot: 32 kDa

## Validations



## Preparation

This antibody was obtained by immunization of FHL2 recombinant protein (Accession Number: NM\_201557). Purification method: Antigen affinity purified.

mouse ovary tissue were subjected to SDS PAGE followed by western blot with Catalog No:110650(FHL2 antibody) at dilution of 1:1000

## Formulation

PBS with 0.02% sodium azide and 50% glycerol pH 7.3.

## Storage

Store at -20°C. DO NOT ALIQUOT

## Clonality

Polyclonal

## Ig Type

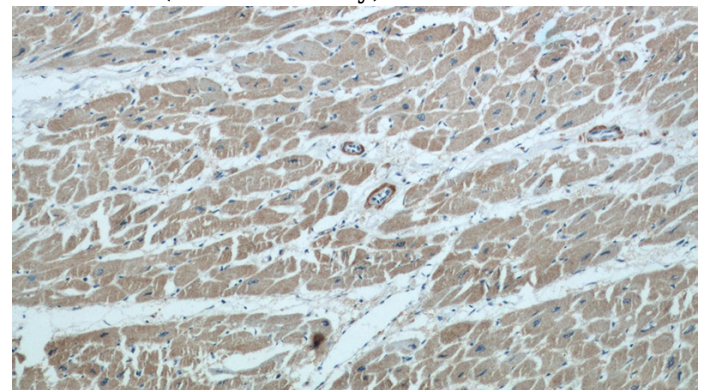
Rabbit IgG

## Applications

ELISA, WB, IHC, IP, IF

## Dilutions

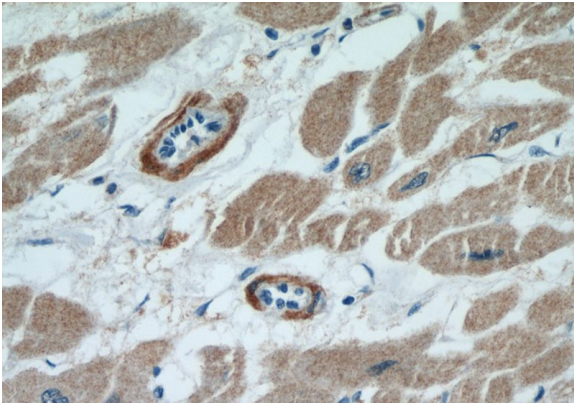
Recommended Dilution:



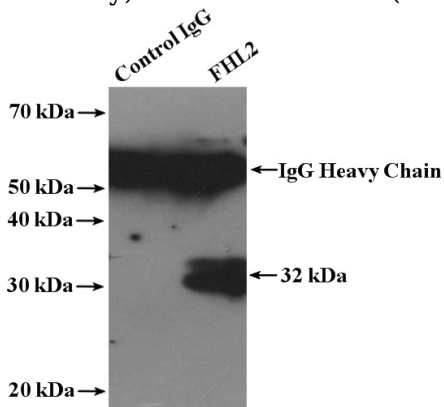
Immunohistochemical of paraffin-embedded human heart using Catalog No:110650(FHL2 antibody) at dilution of 1:50 (under 10x lens)

# FHL2 antibody

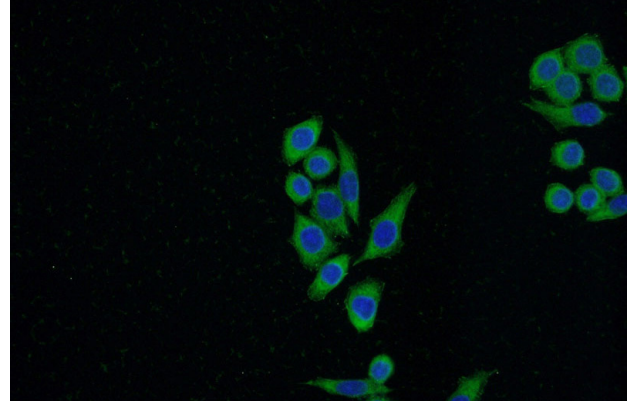
Catalog Number: 110650



Immunohistochemical of paraffin-embedded human heart using Catalog No:110650(FHL2 antibody) at dilution of 1:50 (under 40x lens)



IP Result of anti-FHL2 (IP:Catalog No:110650, 4ug; Detection:Catalog No:110650 1:1000) with mouse skeletal muscle tissue lysate 2200ug.



Immunofluorescent analysis of (-20oc Ethanol) fixed HeLa cells using Catalog No:110650(FHL2 Antibody) at dilution of 1:50 and Alexa Fluor 488-conjugated AffiniPure Goat Anti-Rabbit IgG(H+L)