

Anti-MROH8 antibody

Catalog Number: 175250

Product name

Anti-MROH8 antibody

Specificity

Human, Mouse, Rat, Cow, Horse, Sheep

Antibody description

Rabbit polyclonal antibody to MROH8

Preparation

This antigen of this antibody was klh conjugated synthetic peptide derived from human c20orf132 401-483/483

Formulation

Liquid, 0.01M TBS(pH7.4) with 1% BSA, 0.03% Proclin300 and 50% Glycerol.

Storage

Store at -20°C for one year. Avoid repeated freeze/thaw cycles. The lyophilized antibody is stable at room temperature for at least one month and for greater than a year when kept at -20°C. When reconstituted in sterile pH 7.4 0.01M PBS or diluent of antibody the antibody is stable for at least two weeks at 2-4°C.

Clonality

Polyclonal

Ig Type

Rabbit IgG

Applications

WB

Dilutions

WB:1:500-2000

Validations

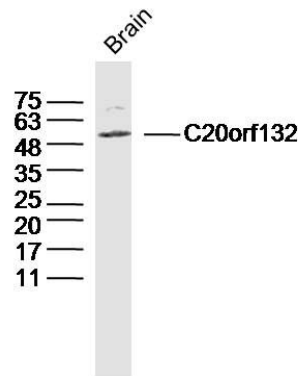
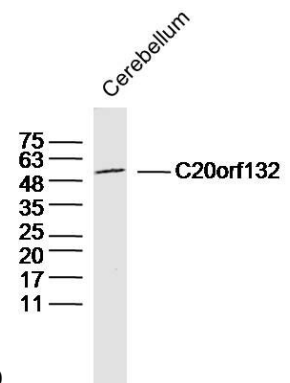


Fig1: Sample:Brain (Mouse) Lysate at 40 ug; Primary: Anti-C20orf132 at 1/300 dilution; Secondary: IRDye800CW Goat Anti-Rabbit IgG at 1/20000 dilution; Predicted band size: 55kD;



Observed band size: 55kD

Fig2: Sample:Cerebellum (Mouse) Lysate at 40 ug; Primary: Anti-C20orf132 at 1/300 dilution; Secondary: IRDye800CW Goat Anti-Rabbit IgG at 1/20000 dilution; Predicted band size: 55kD; Observed band size: 55kD

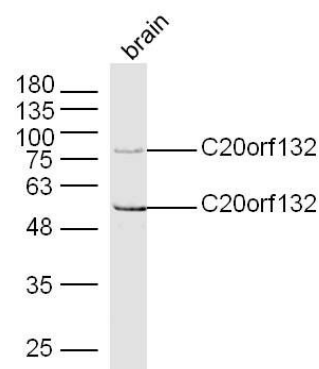


Fig3: Sample: Brain (Mouse) Lysate at 40 ug; Primary: Anti-C20orf132 at 1/300 dilution; Secondary: IRDye800CW Goat Anti-Rabbit IgG at 1/20000 dilution; Predicted band size: 55/99 kD;

Anti-MROH8 antibody



Catalog Number: 175250

Observed band size: 55/95 kD