

# Human SUMO1/SUMO-1 (His Tag) recombinant protein



Catalog Number: 501250

## General Information

### Gene Name Synonym

GAP-modifying protein 1; SMT3 homolog 3; Sentrin; Ubiquitin-homology domain protein PIC1; Ubiquitin-like protein SMT3C; Ubiquitin-like protein UBL1

### Protein Construction

A DNA sequence encoding the human SUMO1 (AAH66306.1) (Ser 2-Val 101) was expressed, with a polyhistidine tag at the N-terminus.

### Organism

Human

### Expression Host

E. coli

## QC Testing

### Activity

Measured by its ability to be proteolytically processed by SENP1.  
>50% of 1 µg Recombinant Human (rh) SUMO1 is cleaved by < 10 ng of recombinant human SENP.

### Purity

> 90 % as determined by SDS-PAGE

### Endotoxin

Please contact us for more information.

### Stability

Samples are stable for up to twelve months from date of receipt at -70°C

### Predicted N terminal

Met

### Molecular Mass

The recombinant human SUMO1 consisting of 107 amino acids and has a calculated molecular mass of 12.4 kDa. It migrates as an 22 kDa band in SDS-PAGE under reducing conditions as predicted.

### Formulation

Lyophilized from sterile 20mM Tris, 500mM NaCl, pH 7.5

1. 5 % trehalose and mannitol are added as protectants before lyophilization.
2. Please contact us for any concerns or special requirements.

## Usage Guide

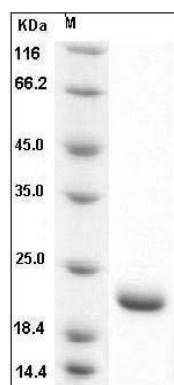
### Storage

Store it under sterile conditions at -20°C to -80°C. It is recommended that the protein be aliquoted for optimal storage. Avoid repeated freeze-thaw cycles.

### Reconstitution

Adding sterile water, prepare a stock solution of 0.25 mg/ml. Concentration is measured by UV-Vis.

### SDS-PAGE



Human SUMO1 / SUMO-1 Protein (His Tag) SDS-PAGE