

Kdm6b Polyclonal Antibody



Catalog Number: 161250

Product name

Kdm6b Polyclonal Antibody

Specificity

Human, Mouse

Antibody description

Polyclonal antibody to Kdm6b

Preparation

Antigen: Recombinant fusion protein containing a sequence corresponding to amino acids 265-450 of mouse Kdm6b (NP_001017426.1).

Formulation

PBS with 0.02% sodium azide, 50% glycerol, pH7.3.

Storage

Store at -20°C. Avoid freeze / thaw cycles.

Clonality

Polyclonal

Ig Type

Rabbit IgG

Applications

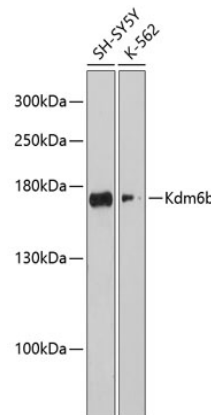
WB, IF

Dilutions

WB 1:500 - 1:2000

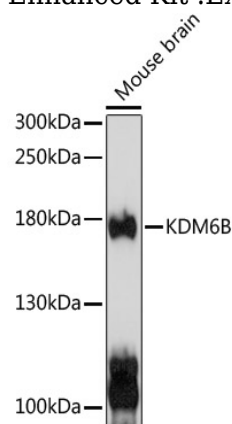
IF 1:50 - 1:200

Validations



Western blot - Kdm6b Polyclonal Antibody

Western blot analysis of extracts of various cell lines, using Kdm6b antibody at 1:3000 dilution. Secondary antibody: HRP Goat Anti-Rabbit IgG (H+L) at 1:10000 dilution. Lysates/proteins: 25ug per lane. Blocking buffer: 3% nonfat dry milk in TBST. Detection: ECL Enhanced Kit. Exposure time: 90s.



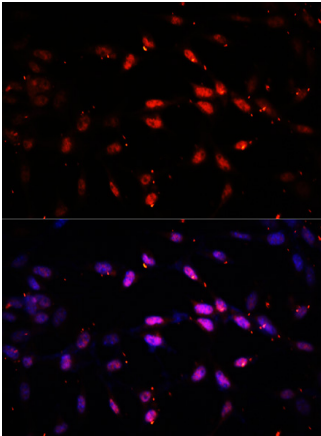
Western blot - Kdm6b Polyclonal Antibody

Western blot analysis of extracts of mouse brain, using KDM6B antibody at 1:1000 dilution. Secondary antibody: HRP Goat Anti-Rabbit IgG (H+L) at 1:10000 dilution. Lysates/proteins: 25ug per lane. Blocking buffer: 3% nonfat dry milk in TBST. Detection: ECL Basic Kit. Exposure time: 10s.

Kdm6b Polyclonal Antibody

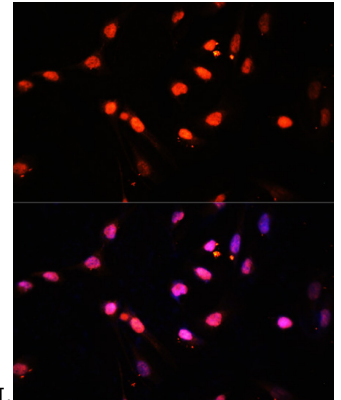


Catalog Number: 161250



Immunofluorescence - Kdm6b Polyclonal Antibody

Immunofluorescence analysis of NIH/3T3 cells using KDM6B antibody at dilution of 1:100. Blue: DAPI for nuclear staining.



DAPI for nuclear staining.

Immunofluorescence - Kdm6b Polyclonal Antibody

Immunofluorescence analysis of U2OS cells using KDM6B antibody at dilution of 1:100. Blue: DAPI for nuclear staining.