

Endothelin 1 antibody



Catalog Number: 110250

Product name

Endothelin 1 antibody

Specificity

Human; other species not tested.

Antibody description

Endothelin 1 Rabbit Polyclonal antibody. Positive WB detected in human ileum tissue, SGC-7901 cells. Positive IHC detected in human lung cancer tissue. Observed molecular weight by Western-blot: 24 kDa

Preparation

This antibody was obtained by immunization of Endothelin 1 recombinant protein (Accession Number: NM_001955). Purification method: Antigen affinity purified.

Formulation

PBS with 0.1% sodium azide and 50% glycerol pH 7.3.

Storage

Store at -20°C. DO NOT ALIQUOT

Clonality

Polyclonal

Ig Type

Rabbit IgG

Applications

ELISA, WB, IHC

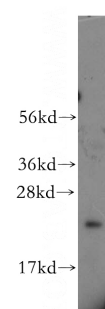
Dilutions

Recommended Dilution:

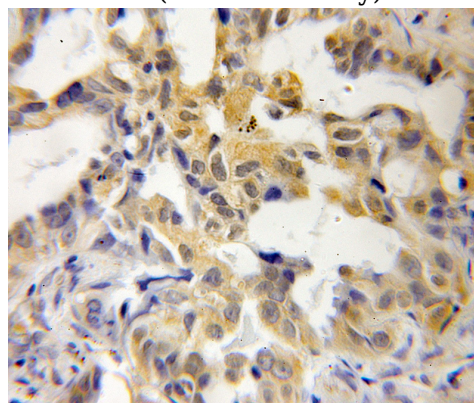
WB: 1:200-1:2000

IHC: 1:20-1:200

Validations



human ileum tissue were subjected to SDS PAGE followed by western blot with Catalog No:110250(EDN1 antibody) at dilution of 1:400



Immunohistochemical of paraffin-embedded human lung cancer using Catalog No:110250(EDN1 antibody) at dilution of 1:50 (under 25x lens)