

# CBY1 antibody

Catalog Number: 108950

## Product name

CBY1 antibody

IP: 1:200-1:2000

IHC: 1:20-1:200

## Specificity

Human, Mouse, Rat; other species not tested.

## Antibody description

CBY1 Rabbit Polyclonal antibody. Positive IHC detected in human kidney tissue, human heart tissue. Positive WB detected in mouse liver tissue, mouse kidney tissue. Positive IP detected in mouse liver tissue. Observed molecular weight by Western-blot: 30-35 kDa

## Preparation

This antibody was obtained by immunization of CBY1 recombinant protein (Accession Number: NM\_015373). Purification method: Antigen affinity purified.

## Formulation

PBS with 0.1% sodium azide and 50% glycerol pH 7.3.

## Storage

Store at -20°C. DO NOT ALIQUOT

## Clonality

Polyclonal

## Ig Type

Rabbit IgG

## Applications

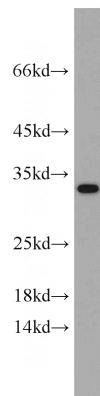
ELISA, WB, IHC, IP

## Dilutions

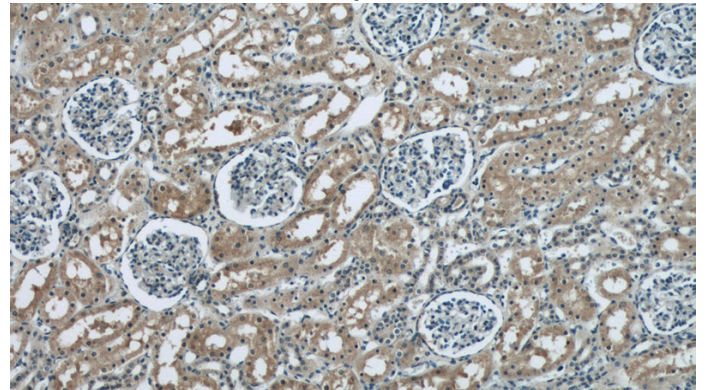
Recommended Dilution:

WB: 1:500-1:5000

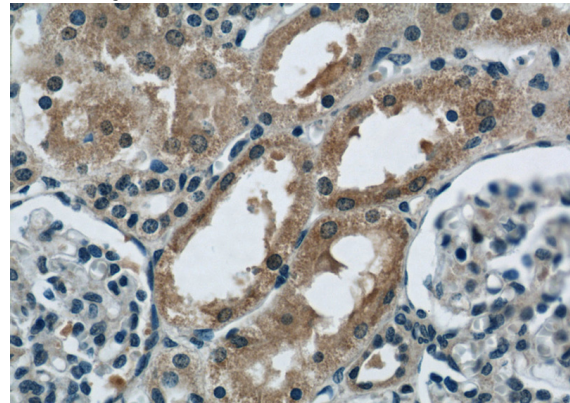
## Validations



mouse liver tissue were subjected to SDS PAGE followed by western blot with Catalog No:108950(CBY1 antibody) at dilution of 1:500



Immunohistochemical of paraffin-embedded human kidney using Catalog No:108950(CBY1 antibody) at dilution of 1:50 (under 10x lens)



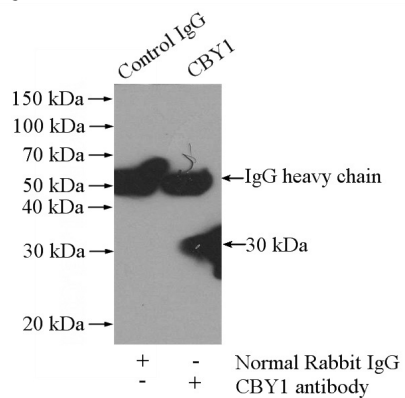
Immunohistochemical of paraffin-embedded human kidney using Catalog No:108950(CBY1

# CBY1 antibody

Catalog Number: 108950

---

antibody) at dilution of 1:50 (under 40x lens)



IP Result of anti-CBY1 (IP:Catalog No:108950, 4ug; Detection:Catalog No:108950 1:500) with mouse liver tissue lysate 4000ug.