

TESC antibody

Catalog Number: 115950

Product name

TESC antibody

Specificity

Human, Mouse, Rat; other species not tested.

Antibody description

TESC Rabbit Polyclonal antibody. Positive WB detected in HeLa cells, mouse brain tissue. Positive IHC detected in human colon cancer tissue, human pancreas cancer tissue. Observed molecular weight by Western-blot: 25 kDa

Preparation

This antibody was obtained by immunization of TESC recombinant protein (Accession Number: NM_017899). Purification method: Antigen affinity purified.

Formulation

PBS with 0.1% sodium azide and 50% glycerol pH 7.3.

Storage

Store at -20°C. DO NOT ALIQUOT

Clonality

Polyclonal

Ig Type

Rabbit IgG

Applications

ELISA, WB, IHC

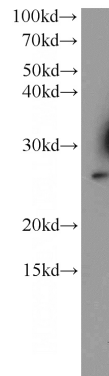
Dilutions

Recommended Dilution:

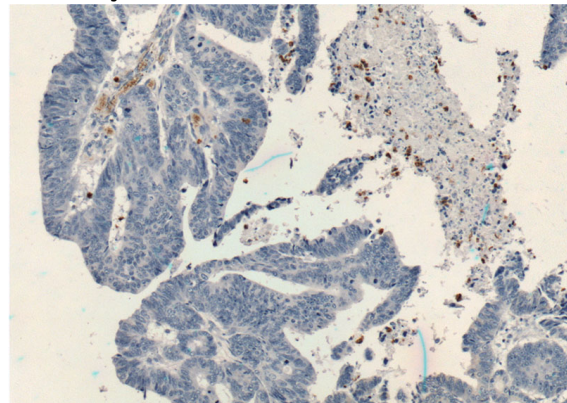
WB: 1:200-1:2000

IHC: 1:50-1:500

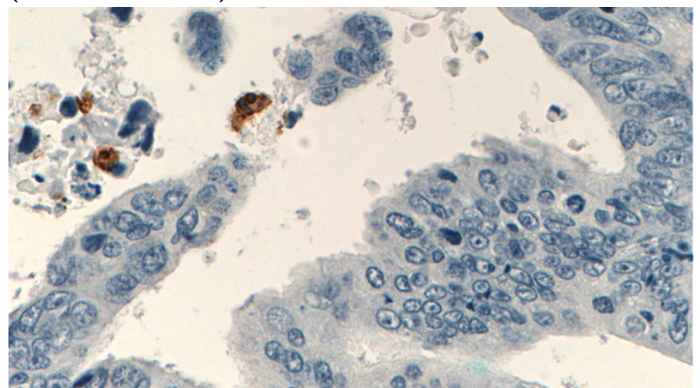
Validations



HeLa cells were subjected to SDS PAGE followed by western blot with Catalog No:115950(TESC antibody) at dilution of 1:300



Immunohistochemistry of paraffin-embedded human colon cancer tissue slide using Catalog No:115950(TESC Antibody) at dilution of 1:200 (under 10x lens).



Immunohistochemistry of paraffin-embedded human colon cancer tissue slide using Catalog No:115950(TESC Antibody) at dilution of 1:200 (under 10x lens).

TESC antibody



Catalog Number: 115950

(under 40x lens).