

Human MAP4K2/GC Kinase (His & GST Tag) recombinant protein



Catalog Number: 502950

General Information

Gene Name Synonym

B lymphocyte serine/threonine-protein kinase;
Germinal center kinase; MAPK/ERK kinase kinase
kinase 2; Rab8-interacting protein

Protein Construction

A DNA sequence encoding the human MAP4K2
(AAH47865.1) (Met 1-Tyr 812) was fused with the
N-terminal polyhistidine-tagged GST tag at the N-
terminus.

Organism

Human

Expression Host

Baculovirus-Insect Cells

QC Testing

Activity

Kinase activity untested

Purity

> 87 % as determined by SDS-PAGE

Endotoxin

< 1.0 EU per μ g of the protein as determined by
the LAL method

Stability

Samples are stable for up to twelve months from
date of receipt at -70°C

Predicted N terminal

Met

Molecular Mass

The recombinant human MAP4K2/GST chimera
consists of 1049 amino acids and has a calculated
molecular mass of 119 kDa. It migrates as an
approximately 116 kDa band in SDS-PAGE under
reducing conditions.

Formulation

Supplied as sterile 50mM Tris, 100mM NaCl, pH
8.0

1. 5 % trehalose and mannitol are added as
protectants before lyophilization.

2. Please contact us for any concerns or special
requirements.

Usage Guide

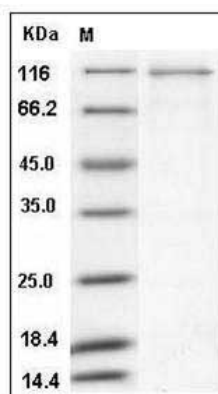
Storage

Store it under sterile conditions at -20°C to -80°C.
It is recommended that the protein be aliquoted
for optimal storage. Avoid repeated freeze-thaw
cycles.

Reconstitution

Adding sterile water, prepare a stock solution of
0.25 mg/ml. Concentration is measured by UV-Vis.

SDS-PAGE



Human MAP4K2 / GC Kinase Protein (His & GST
Tag) SDS-PAGE