

Anti-xCT Rabbit antibody



Catalog Number: 167550

Product name

Anti-xCT Rabbit antibody

Specificity

Human, Mouse, Rat

Antibody description

xCT Rabbit polyclonal antibody

Preparation

Antigen: A synthesized peptide derived from human xCT

Formulation

Rabbit IgG in phosphate buffered saline , pH 7.4, 150mM NaCl, 0.02% sodium azide and 50% glycerol.

Storage

Store at 4°C short term. Store at -20°C long term. Avoid freeze / thaw cycle.

Clonality

Polyclonal

Ig Type

Rabbit IgG

Applications

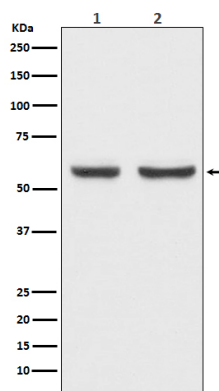
WB, IP

Dilutions

WB: 1/500-1/2000

IP: 1/50

Validations



Western blot analysis of xCT expression in (1) HepG2 cell lysate; (2) Mouse brain lysate.