

Human SCF/C-kit ligand (aa 1-189, His Tag) recombinant protein



Catalog Number: 502550

General Information

Gene Name Synonym

Mast cell growth factor; Stem cell factor; c-Kit ligand; Soluble KIT ligand

Protein Construction

A DNA sequence encoding the amino acid (Met 1-Ala 189) of human SCF (P21583-1) extracellular domain was expressed, with a polyhistidine tag at the C-terminus.

Organism

Human

Expression Host

Baculovirus-Insect Cells

QC Testing

Activity

Measured in a cell proliferation assay using TF-1 human erythroleukemic cells.

The ED₅₀ for this effect is 2-8 ng/mL.

Purity

> 92 % as determined by SDS-PAGE

Endotoxin

< 1.0 EU per µg of the protein as determined by the LAL method

Stability

Samples are stable for up to twelve months from date of receipt at -70°C

Predicted N terminal

Glu 26

Molecular Mass

The secreted recombinant human SCF (aa 1-189) consists of 175 amino acids and predicts a molecular mass of 19.9 kDa. The apparent molecular mass of rh SCF is approximately 22 kDa in SDS-PAGE under reducing conditions.

Formulation

Lyophilized from sterile 20mM Tris, 500mM NaCl, pH 8.0

1. 5 % trehalose and mannitol are added as protectants before lyophilization.

2. Please contact us for any concerns or special requirements.

Usage Guide

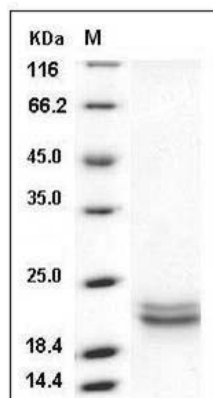
Storage

Store it under sterile conditions at -20°C to -80°C. It is recommended that the protein be aliquoted for optimal storage. Avoid repeated freeze-thaw cycles.

Reconstitution

Adding sterile water, prepare a stock solution of 0.25 mg/ml. Concentration is measured by UV-Vis.

SDS-PAGE



Human SCF / C-kit ligand Protein (aa 1-189, His Tag) SDS-PAGE