

# HSD17B7 antibody



Catalog Number: 111550

## Product name

HSD17B7 antibody

IP: 1:200-1:2000

IHC: 1:20-1:200

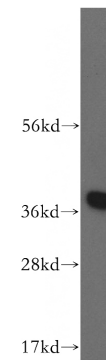
## Specificity

Human; other species not tested.

## Validations

## Antibody description

HSD17B7 Rabbit Polyclonal antibody. Positive IHC detected in human liver tissue. Positive WB detected in human liver tissue, L02 cells. Positive IP detected in L02 cells. Observed molecular weight by Western-blot: 32-37 kDa



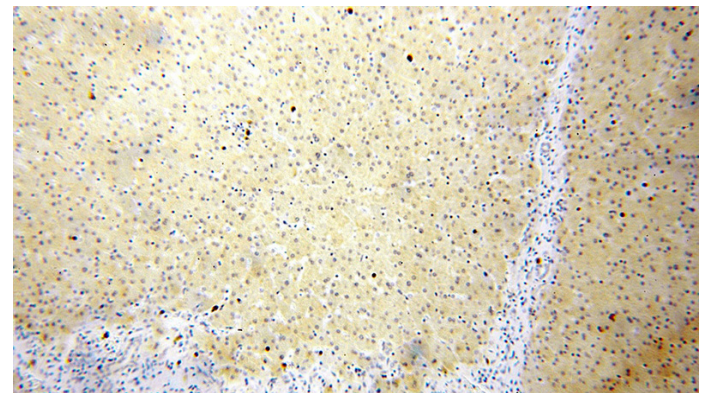
## Preparation

This antibody was obtained by immunization of HSD17B7 recombinant protein (Accession Number: BC071987). Purification method: Antigen affinity purified.

human liver tissue were subjected to SDS PAGE followed by western blot with Catalog No:111550(HSD17B7P2 antibody) at dilution of 1:500

## Formulation

PBS with 0.02% sodium azide and 50% glycerol pH 7.3.



## Storage

Store at -20°C. DO NOT ALIQUOT

## Clonality

Polyclonal

Immunohistochemical of paraffin-embedded human liver using Catalog No:111550(HSD17B7P2 antibody) at dilution of 1:50 (under 10x lens)

## Ig Type

Rabbit IgG

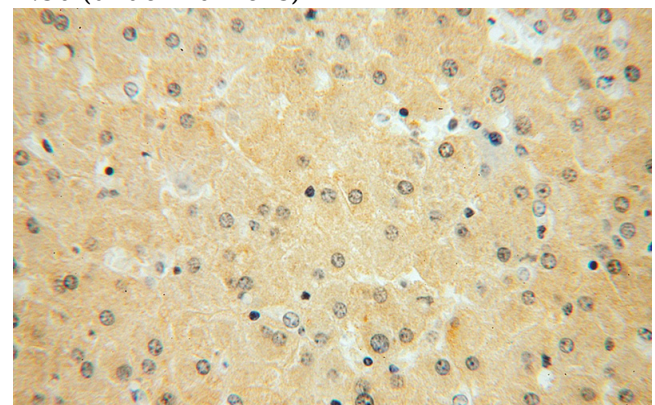
## Applications

ELISA, IHC, WB, IP

## Dilutions

Recommended Dilution:

WB: 1:200-1:2000

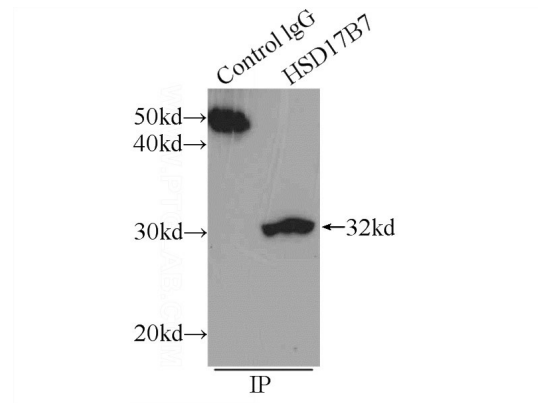


# HSD17B7 antibody

Catalog Number: 111550

---

Immunohistochemical of paraffin-embedded human liver using Catalog No:111550(HSD17B7P2 antibody) at dilution of 1:50 (under 40x lens)



IP Result of anti-HSD17B7P2 (IP:Catalog No:111550, 4ug; Detection:Catalog No:111550 1:500) with L02 cells lysate 2800ug.