

Anti-KLF4 antibody



Catalog Number: 100550

Product name

Anti-KLF4 antibody

Specificity

human KLF4

Antibody description

Rabbit polyclonal to KLF4

Preparation

Produced in rabbits immunized with A synthetic peptide corresponding to the N-terminus of the human KLF4, and purified by antigen affinity chromatography.

Formulation

0.2 µm filtered solution in PBS

Storage

This antibody can be stored at 2°C-8°C for one month without detectable loss of activity. Antibody products are stable for twelve months from date of receipt when stored at -20°C to -80°C.

Preservative-Free.

Sodium azide is recommended to avoid contamination (final concentration 0.05%-0.1%). It is toxic to cells and should be disposed of properly. Avoid repeated freeze-thaw cycles.

Clonality

Polyclonal

Ig Type

Rabbit IgG

Applications

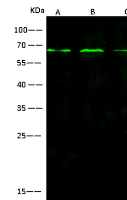
WB, IP

Dilutions

WB: 10-20 µg/ml

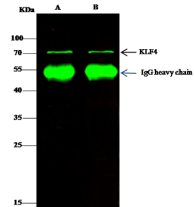
IP: 4-6 µg/mg of lysate

Validations



Items \ Lanes	A	B	C
Sample (whole cell lysate)	293T	Caco-2	HEK293
Sample Volume (µg/tube)	30	30	30
Gel	13% SDS-PAGE reducing gel		
Recommended Concentration	10-20 µg/ml		
Secondary Antibody	Dylight 800-labeled Antibody to Rabbit IgG (He1), at 1:5000 dilution.		
Explanation	Developed using Odyssey imaging system. Predicted band size : 54 kDa Observed band size : 65 kDa		

KLF4 Antibody, Rabbit PAb, Antigen Affinity



Items \ Lanes	A	B
Sample (whole cell lysate)	HeLa	293T
Sample quantity	0.5 mg	
IP antibody quantity	2 µg	
Protein G agarose	1.5 µl of 50% Protein G Agarose	
Gel	13% SDS-PAGE reducing gel	
Primary antibody	KLF4-SMCC-SinoA41 & antibody at 10 µg/ml	
Secondary antibody	Dylight 800-labeled antibody to rabbit IgG (H+L), at 1:5000 dilution	

Purified, Western blot

KLF4 Antibody, Rabbit PAb, Antigen Affinity

Purified, Immunoprecipitation