

Anti-Src Rabbit antibody

Catalog Number: 167150

Product name

Anti-Src Rabbit antibody

Specificity

Human, Mouse, Rat

Antibody description

Src Rabbit polyclonal antibody

Preparation

Antigen: Peptide sequence around aa. 527~531 (P-Q-Y-Q-P) derived from Human Src.

Formulation

Supplied at 1.0mg/mL in phosphate buffered saline (without Mg²⁺ and Ca²⁺), pH 7.4, 150mM NaCl, 0.02% sodium azide and 50% glycerol.

Storage

Store at 4°C short term. Store at -20°C long term. Avoid freeze / thaw cycle.

Clonality

Polyclonal

Ig Type

Rabbit IgG

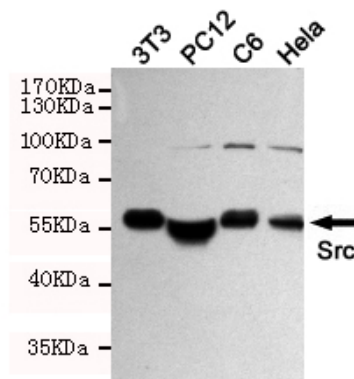
Applications

WB, IHC-P

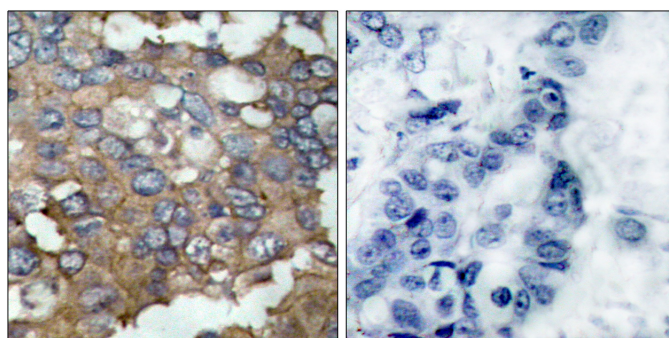
Dilutions

WB:1/1000IHC:1/50-1/100

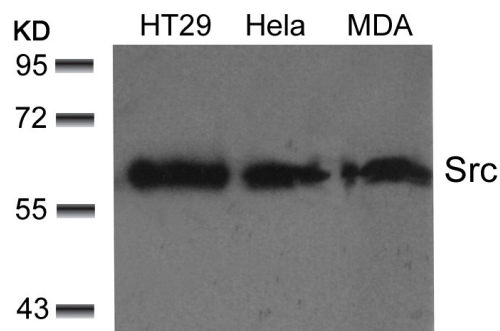
Validations



Western blot detection of Src (Ab-529) in HeLa, C6, 3T3 and PC-12 cell lysates using Src (Ab-529) rabbit pAb (1:1000 diluted). Predicted band size: 60KDa. Observed band size: 60KDa.



Immunohistochemical analysis of paraffin-embedded human breast carcinoma tissue using Src (Ab-529) Antibody (left) or the same antibody preincubated with blocking peptide (right).



Western blot analysis of extracts from HT29, HeLa and MDA cells using Src (Ab-529) Antibody .