

# Mouse Carboxypeptidase A1/CPA1 (His Tag) recombinant protein



Catalog Number: 500150

## General Information

### Protein Construction

A DNA sequence encoding the mouse CPA1 (NP\_079626.2) (Met 1-Tyr 419) precursor was expressed with a C-terminal polyhistidine tag.

### Organism

Mouse

### Expression Host

Human Cells

## QC Testing

### Activity

Measured by its ability to cleave the colorimetric peptide substrate Ac-Phe-Thiaphe-OH in the presence of 5,5'Dithiobis (2-nitrobenzoic acid) (DTNB). The specific activity is >6,000 pmoles/min/μg.

### Purity

> 96 % as determined by SDS-PAGE

### Endotoxin

< 1.0 EU per μg of the protein as determined by the LAL method

### Stability

Samples are stable for up to twelve months from date of receipt at -70°C

### Predicted N terminal

Asn 17

### Molecular Mass

The secreted recombinant pro form of mouse CPA1 comprises 414 amino acids and has a calculated molecular mass of 47 kDa. The recombinant protein migrates as an approximately 42 kDa band in SDS-PAGE under reducing conditions.

### Formulation

Lyophilized from sterile 20mM Tris, 150mM NaCl, pH 7.5

1. 5 % trehalose and mannitol are added as protectants before lyophilization.

2. Please contact us for any concerns or special requirements.

## Usage Guide

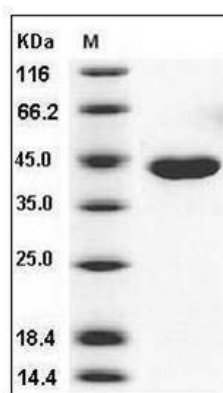
### Storage

Store it under sterile conditions at -20°C to -80°C. It is recommended that the protein be aliquoted for optimal storage. Avoid repeated freeze-thaw cycles.

### Reconstitution

Adding sterile water, prepare a stock solution of 0.25 mg/ml. Concentration is measured by UV-Vis.

### SDS-PAGE



Mouse Carboxypeptidase A1 / CPA1 Protein (His Tag) SDS-PAGE