

# Anti-ENDOGL1/ENGL Rabbit antibody



Catalog Number: 168850

## Product name

Anti-ENDOGL1/ENGL Rabbit antibody

## Ig Type

Rabbit IgG

## Specificity

Human

## Applications

WB

## Antibody description

ENDOGL1/ENGL Rabbit monoclonal antibody

## Dilutions

1:1000

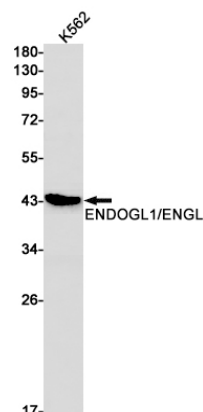
## Preparation

Antigen: A synthetic peptide of human ENDOGL1

## Validations

## Formulation

Supplied in 50nM Tris-Glycine(pH 7.4), 0.15M NaCl, 40%Glycerol, 0.01% sodium azide and 0.05% BSA.



## Storage

Store at 4°C short term. Aliquot and store at -20°C long term. Avoid freeze / thaw cycle.

Western blot detection of ENDOGL1/ENGL in K562 cell lysates using ENDOGL1/ENGL Rabbit mAb(1:1000 diluted).Predicted band size:41kDa.Observed band size:41kDa.

## Clonality

Monoclonal