

Anti-CXCL1 antibody



Catalog Number: 105850

Product name

Anti-CXCL1 antibody

Immunogen

[Rat CXCL1 recombinant protein](#)

Specificity

Rat CXCL1 / MGSA / NAP-3

Antibody description

Rabbit polyclonal to CXCL1

Preparation

Produced in rabbits immunized with purified, recombinant Rat CXCL1 / MGSA / NAP-3 (rh CXCL1 / MGSA / NAP-3; NP_110472.1; Ala25-Lys96). CXCL1 / MGSA / NAP-3 specific IgG was purified by Rat CXCL1 / MGSA / NAP-3 affinity chromatography.

Formulation

0.2 µm filtered solution in PBS

Storage

This antibody can be stored at 2°C-8°C for one month without detectable loss of activity. Antibody products are stable for twelve months from date of receipt when stored at -20°C to -80°C.

Preservative-Free.

Sodium azide is recommended to avoid contamination (final concentration 0.05%-0.1%). It is toxic to cells and should be disposed of properly. Avoid repeated freeze-thaw cycles.

Clonality

Polyclonal

Ig Type

Rabbit IgG

Applications

ELISA, WB, IP

Dilutions

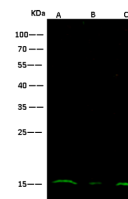
WB: 10-20 µg/ml

ELISA: 0.1-0.2 µg/mL

This antibody can be used at 0.1-0.2 µg/mL with the appropriate secondary reagents to detect Rat CXCL1 / MGSA / NAP-3. The detection limit for Rat CXCL1 / MGSA / NAP-3 is < 0.039 ng/well.

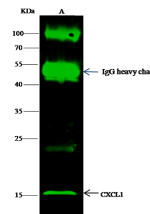
IP: 1-4 µg/mg of lysate

Validations



Items	Lanes	A	B	C
Sample (whole cell lysate)		Jurkat	HeLa	NIH3T3
Sample Volume (µg/lane)		30	30	30
Gel	13% SDS-PAGE reducing gel			
Recommended Concentration	10-20 µg/ml			
Secondary Antibody	Dylight 800-labeled Antibody to Rabbit IgG (H+L), at 1:5000 dilution.			
Explanation	Developed using Odyssey imaging system. Predicted band size : 11 kDa Observed band size : 15 kDa			

CXCL1 / MGSA / NAP-3 Antibody, Rabbit PAb, Antigen Affinity Purified, Western blot



Items	Lanes	A
Sample (whole cell lysate)		HeLa
Sample quantity		0.5 mg
IP antibody quantity		2 µg
Protein G agarose		1.5 µl of 50% Protein G Agarose
Gel	13% SDS-PAGE reducing gel	
Primary antibody	ratCXCL1 antibody at 10 µg/ml	
Secondary antibody	Dylight 800-labeled antibody to rabbit IgG (H+L), at 1:5000 dilution.	

CXCL1 / MGSA / NAP-3 Antibody, Rabbit PAb, Antigen Affinity Purified, Immunoprecipitation