

# MRPS23 antibody



Catalog Number: 112850

## Product name

MRPS23 antibody

## Immunogen

[Human MRPS23 Recombinant protein \(His tag\)](#)

## Specificity

human, mouse, rat; other species not tested.

## Antibody description

MRPS23 Rabbit Polyclonal antibody. Positive IF detected in MCF-7. Positive WB detected in HeLa cells, HepG2 cells, human liver tissue. Observed molecular weight by Western-blot: 23-25kd

## Preparation

This antibody was obtained by immunization of MRPS23 recombinant protein (Accession Number: NM\_016070). Purification method: Antigen affinity purified.

## Formulation

PBS with 0.02% sodium azide and 50% glycerol pH 7.3.

## Storage

Store at -20°C. DO NOT ALIQUOT

## Clonality

Polyclonal

## Ig Type

Rabbit IgG

## Applications

ELISA, WB, IF

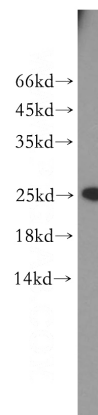
## Dilutions

Recommended Dilution:

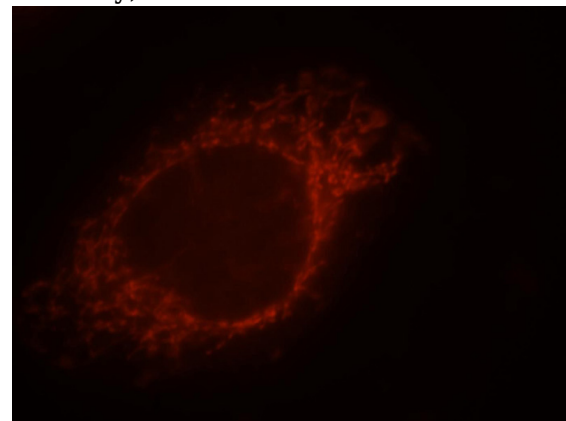
WB: 1:500-1:5000

IF: 1:10-1:100

## Validations



HeLa cells were subjected to SDS PAGE followed by western blot with Catalog No:112850(MRPS23 antibody) at dilution of 1:300



Immunofluorescent analysis of MCF-7 cells, using MRPS23 antibody Catalog No:112850 at 1:25 dilution and Rhodamine-labeled goat anti-rabbit IgG (red).