

# Human EphB1/Eph Receptor B1 (aa 565-984, His & GST Tag) recombinant protein



Catalog Number: 500850

## General Information

### Gene Name Synonym

ELK; EPH tyrosine kinase 2; EPH-like kinase 6; Neuronally-expressed EPH-related tyrosine kinase; Tyrosine-protein kinase receptor EPH-2

### Protein Construction

A DNA sequence encoding the human EPHB1 (AAI11745.1) (Arg565-Ala984) was fused with the N-terminal polyhistidine-tagged GST tag at the N-terminus.

### Organism

Human

### Expression Host

Baculovirus-Insect Cells

## QC Testing

### Activity

The specific activity was determined to be 140 nmol/min/mg using Poly(Glu:Tyr) 4:1 as substrate.

### Purity

> 95 % as determined by SDS-PAGE

### Endotoxin

< 1.0 EU per  $\mu\text{g}$  of the protein as determined by the LAL method

### Stability

Samples are stable for up to twelve months from date of receipt at  $-70^{\circ}\text{C}$

### Predicted N terminal

Met

### Molecular Mass

The recombinant human EPHB1 /GST chimera consists of 657 amino acids and has a calculated molecular mass of 75.3 kDa. The recombinant protein migrates as an approximately 66 kDa band in SDS-PAGE under reducing conditions.

### Formulation

Supplied as sterile 20mM Tris, 500mM NaCl, 3mM DTT, pH 8.0, 10% gly  
1. 5 % trehalose and mannitol are added as protectants before lyophilization.  
2. Please contact us for any concerns or special requirements.

## Usage Guide

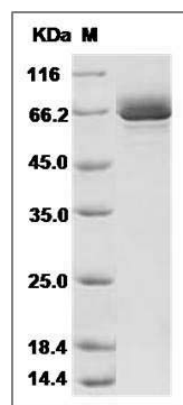
### Storage

Store it under sterile conditions at  $-20^{\circ}\text{C}$  to  $-80^{\circ}\text{C}$ . It is recommended that the protein be aliquoted for optimal storage. Avoid repeated freeze-thaw cycles.

### Reconstitution

Adding sterile water, prepare a stock solution of 0.25 mg/ml. Concentration is measured by UV-Vis.

### SDS-PAGE



Human EphB1 / EPHT2 Protein (aa 565-984, His & GST Tag) SDS-PAGE