

# Connexin-26 antibody



Catalog Number: 109450

## Product name

Connexin-26 antibody

## Specificity

Human, Mouse, Rat; other species not tested.

## Antibody description

Connexin-26 Rabbit Polyclonal antibody. Positive WB detected in PC-3 cells, human liver tissue. Observed molecular weight by Western-blot: 26kd

## Preparation

This antibody was obtained by immunization of Connexin-26 recombinant protein (Accession Number: XM\_011535049). Purification method: Antigen affinity purified.

## Formulation

PBS with 0.02% sodium azide and 50% glycerol pH 7.3.

## Storage

Store at -20°C. DO NOT ALIQUOT

## Clonality

Polyclonal

## Ig Type

Rabbit IgG

## Applications

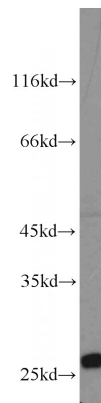
ELISA, WB

## Dilutions

Recommended Dilution:

WB: 1:200-1:2000

## Validations



PC-3 cells were subjected to SDS PAGE followed by western blot with Catalog No:109450(Connexin-26 antibody) at dilution of 1:500