

Anti-CD300LD antibody

Catalog Number: 176450

Product name

Anti-CD300LD antibody

Specificity

Human

Antibody description

Rabbit polyclonal antibody to CD300LD

Preparation

This antigen of this antibody was the antiserum was produced against synthesized peptide derived from the internal region of human cd300ld. aa range:61-110

Formulation

Liquid, Liquid in PBS containing 50% glycerol, 0.5% BSA and 0.02% sodium azide.

Storage

Store at +4°C after thawing. Aliquot store at -20°C or -80°C. Avoid repeated freeze / thaw cycles.

Clonality

Polyclonal

Ig Type

Rabbit IgG

Applications

WB

Dilutions

WB: 1:500-1:2000

Validations

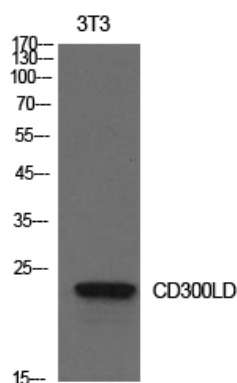


Fig1.; Western Blot analysis of NIH-3T3 cells using CD300d Polyclonal Antibody.. Secondary antibody (catalog#: HA1001) was diluted at 1:20000