

Anti-KRT7 / Cytokeratin-7 antibody



Catalog Number: 105450

Product name

Anti-KRT7 / Cytokeratin-7 antibody

Specificity

Human KRT7

Antibody description

Rabbit polyclonal to KRT7 / Cytokeratin-7

Preparation

Produced in rabbits immunized with A synthetic peptide corresponding to the center region of the human KRT7 , and purified by antigen affinity chromatography.

Formulation

0.2 µm filtered solution in PBS

Storage

This antibody can be stored at 2°C-8°C for one month without detectable loss of activity. Antibody products are stable for twelve months from date of receipt when stored at -20°C to -80°C.

Preservative-Free.

Sodium azide is recommended to avoid contamination (final concentration 0.05%-0.1%). It is toxic to cells and should be disposed of

properly. Avoid repeated freeze-thaw cycles.

Clonality

Polyclonal

Ig Type

Rabbit IgG

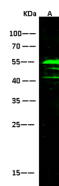
Applications

WB

Dilutions

WB: 5-10 µg/mL

Validations



Items	Lanes	A
Sample (whole cell lysate)		HepG2
Sample Volume (µg/lane)		30
Gel		13% SDS-PAGE reducing gel
Recommended Concentration		5-10µg/ml
Secondary Antibody		Dylight 800-labeled Antibody To Rabbit IgG (H+L), at 1:5000 dilution.
Explanation		Developed using Odyssey imaging system. Predicted band size : 51 kDa Observed band size : 55 kDa Additional bands at : 48 kDa and 40 kDa (We are unsure as to the identity of these extra bands. They are possible non-specific bindings).

KRT7 Antibody, Rabbit PAb, Antigen Affinity Purified, Western blot