

Anti-AMBP antibody

Catalog Number: 141450

Product name

Anti-AMBP antibody

Immunogen

[Rat Protein HC/Bikunin \(His Tag\)](#)

Specificity

Rat Protein HC / Bikunin / Ambp

Antibody description

Rabbit Polyclonal to Rat AMBP

Preparation

Produced in rabbits immunized with purified, recombinant Rat Protein HC / Bikunin / Ambp . Protein HC / Bikunin / Ambp specific IgG was purified by Rat Protein HC / Bikunin / Ambp affinity chromatography.

Formulation

0.2 µm filtered solution in PBS

Storage

This antibody can be stored at 2°C-8°C for one month without detectable loss of activity. Antibody products are stable for twelve months from date of receipt when stored at -20°C to -80°C.

Preservative-Free.

Sodium azide is recommended to avoid contamination (final concentration 0.05%-0.1%). It is toxic to cells and should be disposed of properly. Avoid repeated freeze-thaw cycles.

Clonality

Polyclonal

Ig Type

Rabbit IgG

Applications

WB, ELISA, IHC-P, IP

Dilutions

WB: 5-20 µg/ml

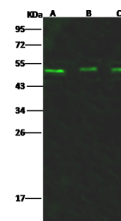
ELISA: 0.1-0.2 µg/ml

This antibody can be used at 0.1-0.2 µg/ml with the appropriate secondary reagents to detect Rat Protein HC / Bikunin / Ambp.

IHC-P: 0.1-2 µg/mL

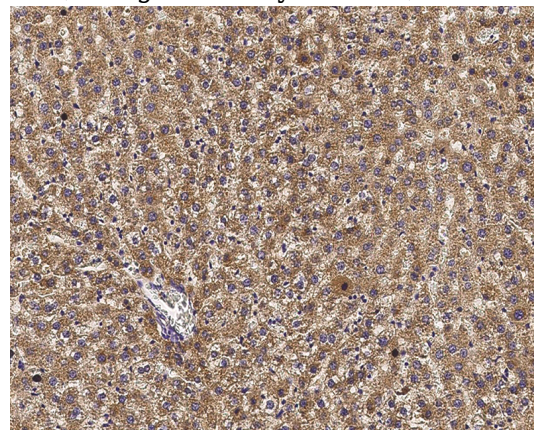
IP: 1-4 µl/mg of lysate

Validations



| Lanes | A | B | C |
|---|---|-------|------|
| Sample (whole cell lysate) | A549 | HepG2 | 293T |
| Sample Volume (µg/lane) | 30 | 30 | 30 |
| Gel | 13% SDS-PAGE reducing gel | | |
| Recommended Concentration | 5-20 µg/ml | | |
| Secondary Antibody | Dylight 800-labeled Antibody To Rabbit IgG (H+L), at 1:5000 dilution. | | |
| Developed using Odyssey imaging system. | | | |
| Explanation | Predicted band size : 39 kDa Observed band size : 50 kDa | | |

Protein HC / Bikunin / Ambp Antibody, Rabbit PAb, Antigen Affinity Purified, Western blot

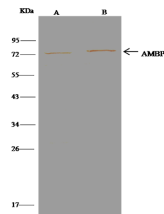


Protein HC / Bikunin / Ambp Antibody, Rabbit PAb, Antigen Affinity Purified,

Anti-AMBP antibody



Catalog Number: 141450



Protein HC / Bikunin / Ambp Antibody, Rabbit PAb, Antigen Affinity Purified, Immunoprecipitation

Immunohistochemistry

| Lanes | A | B |
|----------------------------|--|------|
| Sample (whole cell lysate) | HepG2 | 293T |
| Sample quantity | 0.5 mg | |
| IP antibody quantity | 4 μ l | |
| Protein G agarose | 1.5 μ l of 50% Protein G Agarose | |
| Gel | 13% SDS-PAGE reducing gel | |
| Primary antibody | Rat AMBP-His antibody at 10 μ g/ml | |
| Secondary antibody | Clean-Block IP Detection Reagent (HRP) at 1:500 dilution | |