

Anti-CLSTN1 Rabbit antibody



Catalog Number: 168050

Product name

Anti-CLSTN1 Rabbit antibody

Specificity

Human, Mouse

Antibody description

CLSTN1 Rabbit monoclonal antibody

Preparation

Antigen: A synthetic peptide of human CLSTN1

Formulation

50nM Tris-Glycine(pH 7.4), 0.15M NaCl, 40%Glycerol, 0.01% sodium azide and 0.05% BSA

Storage

Store at 4°C short term. Store at -20°C long term. Avoid freeze / thaw cycle.

Clonality

Monoclonal

Ig Type

Rabbit IgG

Applications

WB, IHC-P, ICC/IF

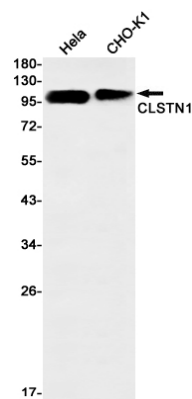
Dilutions

WB: 1/1000

IHC: 1/50

ICC/IF: 1/50

Validations



Western blot detection of CLSTN1 in HeLa, CHO-K1 cell lysates using CLSTN1 Rabbit mAb(1:1000 diluted). Predicted band size:110kDa. Observed band size:110kDa.