

# Anti-LAMC3 antibody



Catalog Number: 176050

## Product name

Anti-LAMC3 antibody

## Specificity

Human, Mouse

## Antibody description

Rabbit polyclonal antibody to LAMC3

## Preparation

This antigen of this antibody was the antiserum was produced against synthesized peptide derived from human lamc3. aa range:1361-1410

## Formulation

Liquid, Liquid in PBS containing 50% glycerol, 0.5% BSA and 0.02% sodium azide.

## Storage

Store at +4°C after thawing. Aliquot store at -20°C or -80°C. Avoid repeated freeze / thaw cycles.

## Clonality

Polyclonal

## Ig Type

Rabbit IgG

## Applications

WB, IHC-P, IF

## Dilutions

WB: 1:500-1:2000

IHC-P: 1:100-1:300

IF: 1:100-1:500

## Validations

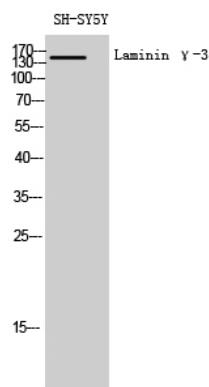


Fig1.: Western Blot analysis of SH-SY5Y cells using Laminin  $\gamma$ -3 Polyclonal Antibody diluted at 1: 1000