

# ND1 antibody

Catalog Number: 113050

## Product name

ND1 antibody

IP: 1:200-1:2000

IHC: 1:20-1:200

## Specificity

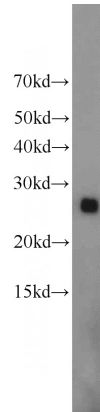
Human, Mouse; other species not tested.

IF: 1:10-1:100

## Antibody description

ND1 Rabbit Polyclonal antibody. Positive WB detected in mouse liver tissue, HeLa cells, HepG2 cells. Positive IP detected in mouse liver tissue. Positive IF detected in HepG2 cells. Positive IHC detected in human liver tissue, human heart tissue. Observed molecular weight by Western-blot: 28-38 kDa

## Validations



## Preparation

This antibody was obtained by immunization of Peptide (Accession Number: NC\_012920). Purification method: Antigen affinity purified.

mouse liver tissue were subjected to SDS PAGE followed by western blot with Catalog No:113050(ND1 antibody) at dilution of 1:1000

## Formulation

PBS with 0.02% sodium azide and 50% glycerol pH 7.3.

## Storage

Store at -20°C. DO NOT ALIQUOT

## Clonality

Polyclonal

## Ig Type

Rabbit IgG

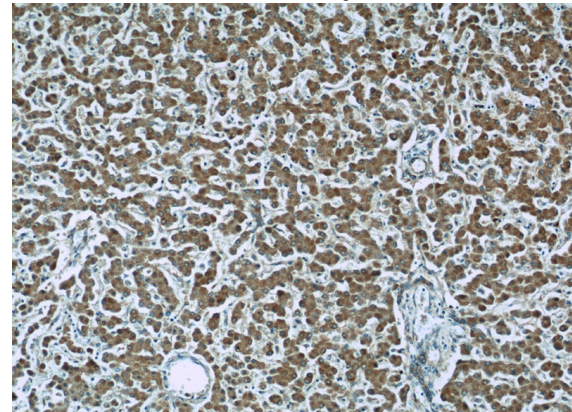
## Applications

ELISA, WB, IF, IHC, IP

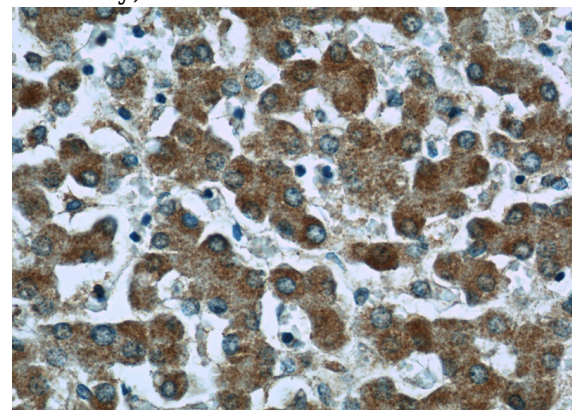
## Dilutions

Recommended Dilution:

WB: 1:500-1:5000



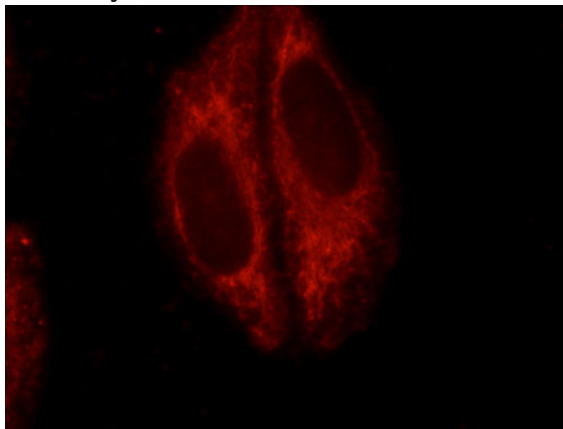
Immunohistochemistry of paraffin-embedded human liver slide using Catalog No:113050(ND1 Antibody) at dilution of 1:50



# ND1 antibody

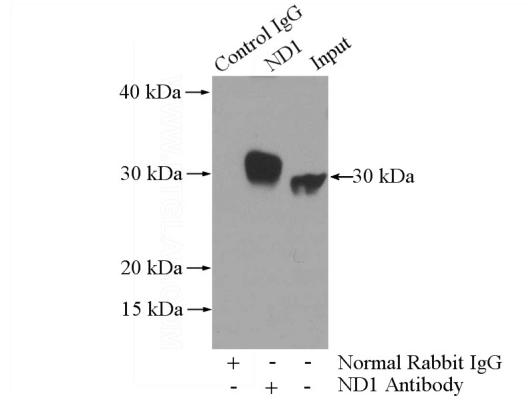
Catalog Number: 113050

Immunohistochemistry of paraffin-embedded human liver slide using Catalog No:113050(ND1 Antibody) at dilution of 1:50



Immunofluorescent analysis of HepG2 cells using

Catalog No:113050(ND1 Antibody) at dilution of 1:25 and Rhodamine-Goat anti-Rabbit IgG



IP Result of anti-ND1 (IP:Catalog No:113050, 3ug; Detection:Catalog No:113050 1:500) with mouse liver tissue lysate 4000ug.