

Human CES2/Carboxylesterase 2 (His Tag) recombinant protein



Catalog Number: 503050

General Information

Gene Name Synonym

Carboxylesterase 2; Methylumbelliferyl-acetate deacetylase 2

Protein Construction

A DNA sequence encoding the human CES2 isoform 1 (O00748-1) (Met 1-Leu 559) was expressed, with a C-terminal polyhistidine tag.

Organism

Human

Expression Host

Human Cells

QC Testing

Purity

> 95 % as determined by SDS-PAGE

Endotoxin

< 1.0 EU per μg of the protein as determined by the LAL method

Stability

Samples are stable for up to twelve months from date of receipt at -70°C

Predicted N terminal

Gln 27

Molecular Mass

The secreted recombinant human CES2 comprises 544 amino acids with a predicted molecular mass of 60.4 kDa, as estimated in SDS-PAGE under reducing conditions.

Formulation

Lyophilized from sterile 50mM NaAc, 150mM NaCl, 10% Glycerol, pH 5.5

- 5 % trehalose and mannitol are added as protectants before lyophilization.
- Please contact us for any concerns or special requirements.

Usage Guide

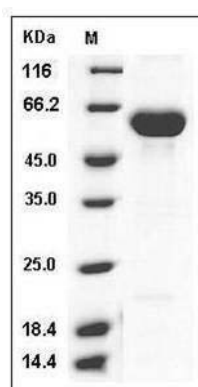
Storage

Store it under sterile conditions at -20°C to -80°C . It is recommended that the protein be aliquoted for optimal storage. Avoid repeated freeze-thaw cycles.

Reconstitution

Adding sterile water, prepare a stock solution of 0.25 mg/ml. Concentration is measured by UV-Vis.

SDS-PAGE



Human CES2 / Carboxylesterase-2 Protein (His Tag) SDS-PAGE