

Anti-Argonaute-2 Rabbit antibody



Catalog Number: 168740

Product name

Anti-Argonaute-2 Rabbit antibody

Specificity

Human, Mouse, Rat

Antibody description

Argonaute-2 Rabbit monoclonal antibody

Preparation

Antigen: A synthetic peptide of human Argonaute-2

Formulation

50nM Tris-Glycine(pH 7.4), 0.15M NaCl, 40%Glycerol, 0.01% sodium azide and 0.05% BSA.

Storage

Store at 4°C short term. Store at -20°C long term. Avoid freeze / thaw cycle.

Clonality

Monoclonal

Ig Type

Rabbit IgG

Applications

WB, IHC-P, ICC/IF, FC, IP

Dilutions

WB: 1/1000

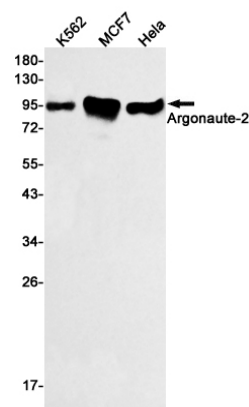
IHC: 1/20

ICC/IF: 1/20-1/50

FC: 1/20

IP: 1/20

Validations



Western blot detection of Argonaute-2 in K562, MCF7, HeLa cell lysates using Argonaute-2 Rabbit mAb(1:500 diluted). Predicted band size: 97kDa. Observed band size: 97kDa.