

# Anti-BPHL antibody



Catalog Number: 106740

## Product name

Anti-BPHL antibody

## Immunogen

[Human BPHL \(His Tag\) recombinant protein](#)

## Specificity

Human BPHL

## Antibody description

Rabbit polyclonal to BPHL

## Preparation

Produced in rabbits immunized with purified, recombinant Human BPHL (rh BPHL; Q86WA6-1; Ser38-Gln291). BPHL specific IgG was purified by Human BPHL affinity chromatography.

## Formulation

0.2 µm filtered solution in PBS

## Storage

This antibody can be stored at 2°C-8°C for one month without detectable loss of activity. Antibody products are stable for twelve months from date of receipt when stored at -20°C to -80°C.

Preservative-Free.

Sodium azide is recommended to avoid contamination (final concentration 0.05%-0.1%). It is toxic to cells and should be disposed of properly. Avoid repeated freeze-thaw cycles.

## Clonality

Polyclonal

## Ig Type

Rabbit IgG

## Applications

ELISA, WB, IHC-P, IP

## Dilutions

WB: 5-10 µg/ml

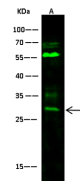
ELISA:0.1-0.2 µg/mL

This antibody can be used at 0.1-0.2 µg/mL with the appropriate secondary reagents to detect Human BPHL. The detection limit for Human BPHL is < 0.039 ng/well.

IHC-P: 0.1-2 µg/ml

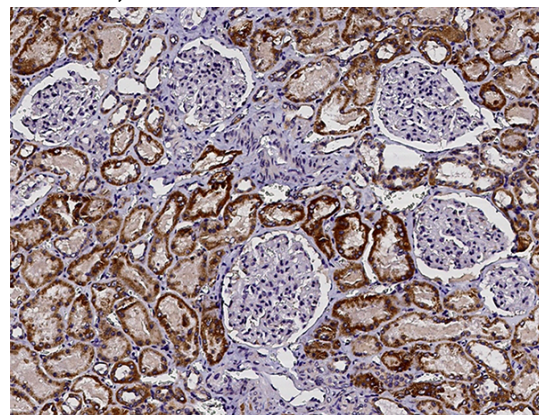
IP: 1-4 µg/mg of lysate

## Validations



Lanes	A
Items	
Sample (whole cell lysate)	THP1
Sample Volume (µg/lane)	30
Gel	13% SDS-PAGE reducing gel
Recommended Concentration	5-10µg/ml
Secondary Antibody	Dylight 800-labeled Antibody To Rabbit IgG (H+L), at 1:5000 dilution.
Developed using Odyssey imaging system.	
Explanation	Predicted band size : 32 kDa Observed band size : 30 kDa Additional bands at : 55 kDa and 35kDa (We are unsure as to the identity of these extra bands. They are possible non-specific bindings).

BPHL Antibody, Rabbit PAb, Antigen Affinity Purified, Western blot

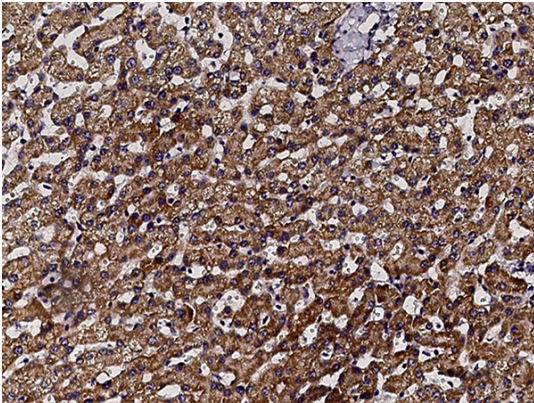


BPHL Antibody, Rabbit PAb, Antigen Affinity Purified, Immunohistochemistry

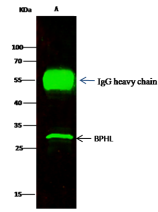
# Anti-BPHL antibody



Catalog Number: 106740



BPHL Antibody, Rabbit PAb, Antigen Affinity Purified, Immunohistochemistry



Item	Panel
Sample (whole cell lysate)	A
Sample quantity	293T 0.5 mg
IP antibody quantity	2 µg
Protein G agarose	15 µl of 50% Protein G Agarose
Gel	13% SDS-PAGE reducing gel
Primary antibody	BPHL antibody at 1.0 µg/ml
Secondary antibody	Dylight 800-labeled antibody to rabbit IgG (G11+), at 1:5000 dilution

BPHL Antibody, Rabbit PAb, Antigen Affinity Purified, Immunoprecipitation