

EGLN2 Polyclonal Antibody



Catalog Number: 163740

Product name

EGLN2 Polyclonal Antibody

Specificity

Human, Mouse, Rat

Antibody description

Polyclonal antibody to EGLN2

Preparation

Antigen: A synthetic peptide corresponding to a sequence within amino acids 150-250 of human EGLN2 (NP_444274.1).

Formulation

PBS with 0.02% sodium azide, 50% glycerol, pH7.3.

Storage

Store at -20°C. Avoid freeze / thaw cycles.

Clonality

Polyclonal

Ig Type

Rabbit IgG

Applications

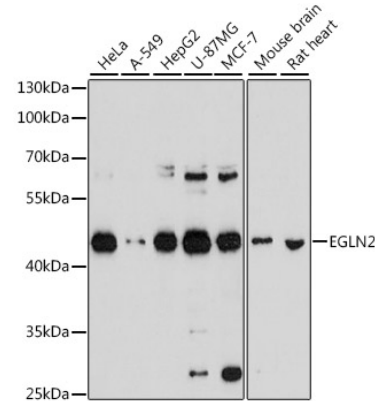
WB, IP

Dilutions

WB 1:500 - 1:2000

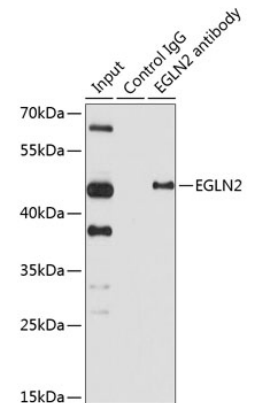
IP 1:20 - 1:50

Validations



Western blot - EGLN2 Polyclonal Antibody

Western blot analysis of extracts of various cell lines, using EGLN2 antibody at 1:1000 dilution. Secondary antibody: HRP Goat Anti-Rabbit IgG (H+L) at 1:10000 dilution. Lysates/proteins: 25ug per lane. Blocking buffer: 3% nonfat dry milk in TBST. Detection: ECL



Basic Kit .Exposure time: 30s.

Immunoprecipitation - EGLN2 Polyclonal Antibody

Immunoprecipitation analysis of 150ug extracts of HeLa cells using 3ug EGLN2 antibody . Western blot was performed from the immunoprecipitate using EGLN2 antibody at a dilution of 1:1000.