

# Mouse MEP1A (His Tag) recombinant protein



Catalog Number: 502740

## General Information

### Gene Name Synonym

Endopeptidase-2; MEP-1

### Protein Construction

A DNA sequence encoding the mouse MEP1A (NP\_032611.2) (Met 1-Arg 615) was expressed, fused with a polyhistidine tag at the C-terminus.

### Organism

Mouse

### Expression Host

Human Cells

## QC Testing

### Activity

Measured by its ability to cleave a fluorogenic peptide substrate, Mca-YVADAPK(Dnp)-OH, R&D Systems, Catalog # ES007 The specific activity is >400 pmoles/min/ $\mu$ g.

### Purity

> 95 % as determined by SDS-PAGE

### Endotoxin

< 1.0 EU per  $\mu$ g of the protein as determined by the LAL method

### Stability

Samples are stable for up to twelve months from date of receipt at -70°C

### Predicted N terminal

Cys 21

## Molecular Mass

The recombinant mouse MEP1A consists of 606 amino acids after removal of the signal peptide and has a predicted molecular mass of 69 kDa. In SDS-PAGE under reducing conditions, the apparent molecular mass of rm MEP1A is approximately 80-90 kDa due to glycosylation.

## Formulation

Lyophilized from sterile PBS, pH 7.4

1. 5 % trehalose and mannitol are added as protectants before lyophilization.

2. Please contact us for any concerns or special requirements.

## Usage Guide

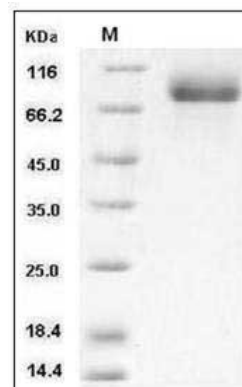
### Storage

Store it under sterile conditions at -20°C to -80°C. It is recommended that the protein be aliquoted for optimal storage. Avoid repeated freeze-thaw cycles.

### Reconstitution

Adding sterile water, prepare a stock solution of 0.25 mg/ml. Concentration is measured by UV-Vis.

## SDS-PAGE



Mouse MEP1A Protein (His Tag) SDS-PAGE