

NTF2 antibody

Catalog Number: 107340

Product name

NTF2 antibody

IHC: 1:20-1:200

IF: 1:20-1:200

Specificity

Human; other species not tested.

Validations

Antibody description

NTF2 Mouse Monoclonal antibody. Positive WB detected in HeLa cells, HepG2 cells, human heart tissue. Positive IF detected in MCF-7 cells, HeLa cells. Positive IHC detected in human liver tissue. Observed molecular weight by Western-blot: 13kD



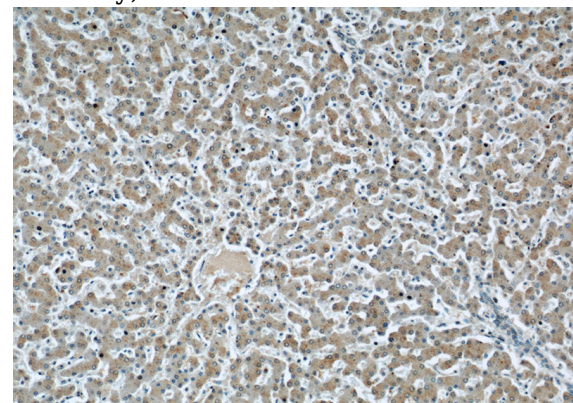
Preparation

This antibody was obtained by immunization of NTF2 recombinant protein (Accession Number: NM_001322040). Purification method: Protein G purified.

HeLa cells were subjected to SDS PAGE followed by western blot with Catalog No:107340(NUTF2 antibody) at dilution of 1:1000

Formulation

PBS with 0.02% sodium azide and 50% glycerol pH 7.3.



Storage

Store at -20°C. DO NOT ALIQUOT

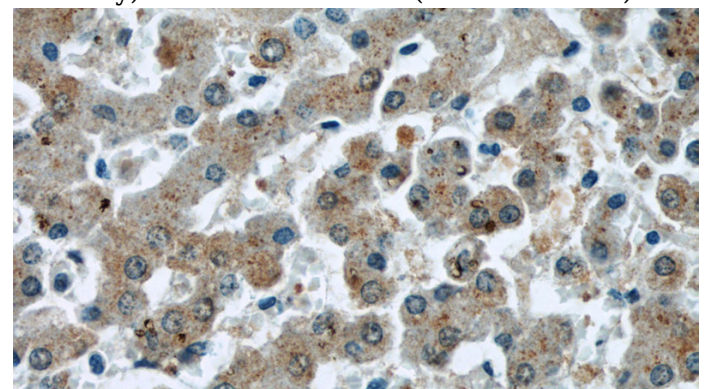
Clonality

Monoclonal

Immunohistochemical of paraffin-embedded human liver using Catalog No:107340(NUTF2 antibody) at dilution of 1:100 (under 10x lens)

Ig Type

Mouse IgG1



Applications

ELISA, WB, IF, IHC

Dilutions

Recommended Dilution:

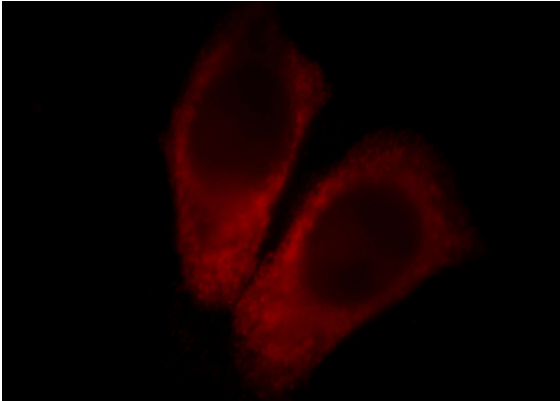
WB: 1:500-1:5000

Immunohistochemical of paraffin-embedded human liver using Catalog No:107340(NUTF2

NTF2 antibody

Catalog Number: 107340

antibody) at dilution of 1:100 (under 40x lens)



Immunofluorescent analysis of MCF-7 cells, using NUTF2 antibody Catalog No: at 1:50 dilution and Rhodamine-labeled goat anti-mouse IgG (red).