

Anti-SERINC2 antibody



Catalog Number: 176340

Product name

Anti-SERINC2 antibody

Specificity

Human, Mouse, Rat

Antibody description

Rabbit polyclonal antibody to SERINC2

Preparation

This antigen of this antibody was the antiserum was produced against synthesized peptide derived from human serc2. aa range:341-390

Formulation

Liquid, Liquid in PBS containing 50% glycerol, 0.5% BSA and 0.02% sodium azide.

Storage

Store at +4°C after thawing. Aliquot store at -20°C or -80°C. Avoid repeated freeze / thaw cycles.

Clonality

Polyclonal

Ig Type

Rabbit IgG

Applications

WB, IHC-P, IF

Dilutions

WB: 1:500-1:2000

IHC-P: 1:100-1:300

IF: 1:100-1:500

Validations

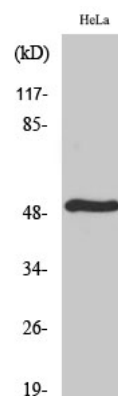


Fig1.; Western blot analysis of TDE2L on hela cells lysates. Proteins were transferred to a PVDF membrane and blocked with 5% BSA in PBS for 1 hour at room temperature. The primary antibody (1/500) was used in 5% BSA at room temperature for 2 hours. Goat Anti-Rabbit IgG - HRP Secondary Antibody (HA1001) at 1:5,000 dilution was used for 1 hour at room temperature.