

# SLC4A1AP antibody



Catalog Number: 115340

## Product name

SLC4A1AP antibody

## Specificity

Human; other species not tested.

## Antibody description

SLC4A1AP Rabbit Polyclonal antibody. Positive IHC detected in human kidney tissue.

## Preparation

This antibody was obtained by immunization of SLC4A1AP recombinant protein (Accession Number: BC099711). Purification method: Antigen affinity purified.

## Formulation

PBS with 0.02% sodium azide and 50% glycerol pH 7.3.

## Storage

Store at -20°C. DO NOT ALIQUOT

## Clonality

Polyclonal

## Ig Type

Rabbit IgG

## Applications

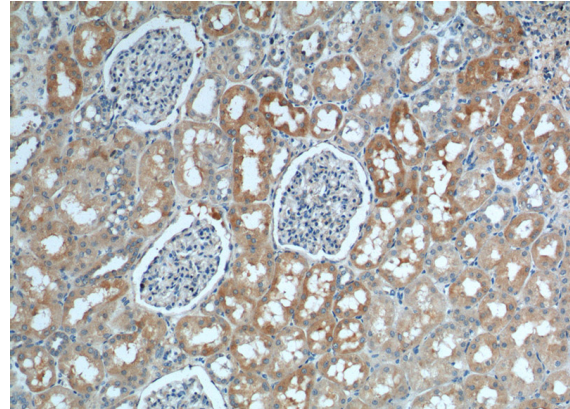
ELISA, IHC

## Dilutions

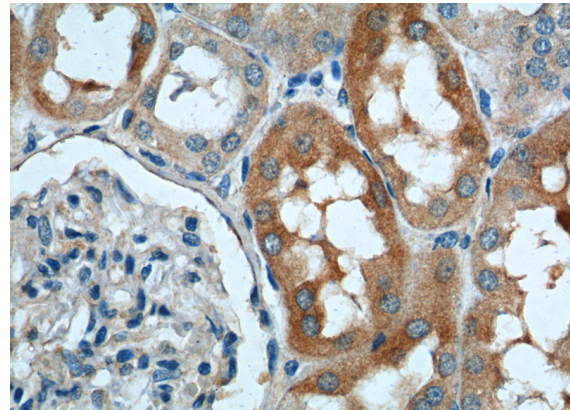
Recommended Dilution:

IHC: 1:50-1:500

## Validations



Immunohistochemistry of paraffin-embedded human kidney tissue slide using Catalog No:115340(SLC4A1AP Antibody) at dilution of 1:200 (under 10x lens).



Immunohistochemistry of paraffin-embedded human kidney tissue slide using Catalog No:115340(SLC4A1AP Antibody) at dilution of 1:200 (under 40x lens).