

Mouse EphA6 / EHK2 / Eph Receptor A6 (His Tag) recombinant protein



Catalog Number: 503340

General Information

Protein Construction

A DNA sequence encoding the extracellular domain of mouse EphA6 (NP_031964.2) (Met 1-Gln 546) was expressed, with a C-terminal polyhistidine tag.

Organism

Mouse

Expression Host

Human Cells

QC Testing

Activity

Measured by its binding ability in a functional ELISA. Immobilized recombinant mouse EphA6 at 2 µg/ml (100 µl/well) can bind recombinant human EphrinA3 at a linear range of 0.31-10 ng/ml.

Purity

> 97 % as determined by SDS-PAGE

Endotoxin

< 1.0 EU per µg of the protein as determined by the LAL method

Stability

Samples are stable for up to twelve months from date of receipt at -70°C

Predicted N terminal

Ser 28

Molecular Mass

The secreted recombinant mouse EphA6 comprises 530 amino acids and has a calculated molecular mass of 59.5 kDa. As a result of glycosylation, the recombinant protein migrates as an approximately 65 kDa band in SDS-PAGE under reducing conditions.

Formulation

Lyophilized from sterile PBS, pH 7.4

1. 5 % trehalose and mannitol are added as protectants before lyophilization.

2. Please contact us for any concerns or special requirements.

Usage Guide

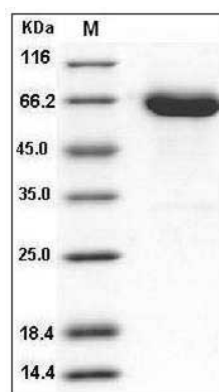
Storage

Store it under sterile conditions at -20°C to -80°C. It is recommended that the protein be aliquoted for optimal storage. Avoid repeated freeze-thaw cycles.

Reconstitution

Adding sterile water, prepare a stock solution of 0.25 mg/ml. Concentration is measured by UV-Vis.

SDS-PAGE



Mouse EphA6 / EHK-2 Protein (His Tag) SDS-PAGE