

HIBADH antibody



Catalog Number: 111340

Product name

HIBADH antibody

IP: 1:200-1:2000

IHC: 1:20-1:200

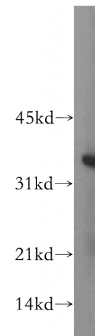
Specificity

Human, Mouse, Rat; other species not tested.

Antibody description

HIBADH Rabbit Polyclonal antibody. Positive IHC detected in human liver cancer tissue. Positive WB detected in mouse heart tissue, mouse ovary tissue, mouse thymus tissue. Positive IP detected in mouse heart tissue. Observed molecular weight by Western-blot: 35 kDa

Validations



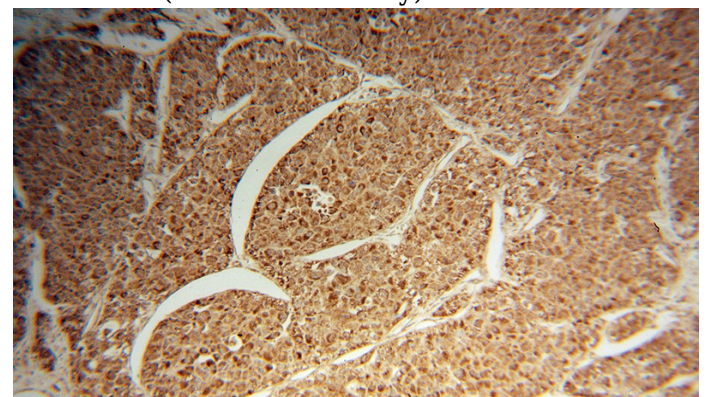
Preparation

This antibody was obtained by immunization of HIBADH recombinant protein (Accession Number: NM_152740). Purification method: Antigen affinity purified.

mouse heart tissue were subjected to SDS PAGE followed by western blot with Catalog No:111340(HIBADH antibody) at dilution of 1:400

Formulation

PBS with 0.02% sodium azide and 50% glycerol pH 7.3.



Storage

Store at -20°C. DO NOT ALIQUOT

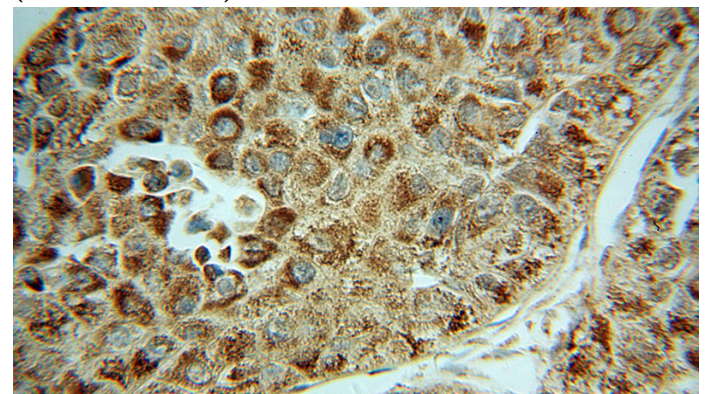
Clonality

Polyclonal

Immunohistochemical of paraffin-embedded human liver cancer using Catalog No:111340(HIBADH antibody) at dilution of 1:50 (under 10x lens)

Ig Type

Rabbit IgG



Applications

ELISA, WB, IHC, IP

Dilutions

Recommended Dilution:

WB: 1:200-1:2000

Immunohistochemical of paraffin-embedded

HIBADH antibody

Catalog Number: 111340

human liver cancer using Catalog No:111340(HIBADH antibody) at dilution of 1:50

IP Result of anti-HIBADH (IP:Catalog No:111340, 4ug; Detection:Catalog No:111340 1:800) with mouse heart tissue lysate 4000ug.

