

## General Information

### Gene Name Synonym

Serine (Or cysteine) peptidase inhibitor, clade B, member 3C

### Protein Construction

A DNA sequence encoding the mouse SERPINB3C (NP\_958751.2) (Met 1-Pro 386) was expressed, with a C-terminal polyhistidine tag.

### Organism

Mouse

### Expression Host

Baculovirus-Insect Cells

## QC Testing

### Purity

> 95 % as determined by SDS-PAGE

### Endotoxin

< 1.0 EU per  $\mu\text{g}$  of the protein as determined by the LAL method

### Stability

Samples are stable for up to twelve months from date of receipt at  $-70^{\circ}\text{C}$

### Predicted N terminal

Met 1

### Molecular Mass

The recombinant mouse SERPINB3C consists of

397 amino acids and has a calculated molecular mass of 46.5 kDa. The apparent molecular mass of the protein is approximately 46 & 95 kDa in SDS-PAGE under reducing conditions, corresponding to the monomer and dimer.

### Formulation

Lyophilized from sterile 50mM Tris 100mM NaCl, pH 8.0

1. 5 % trehalose and mannitol are added as protectants before lyophilization.
2. Please contact us for any concerns or special requirements.

## Usage Guide

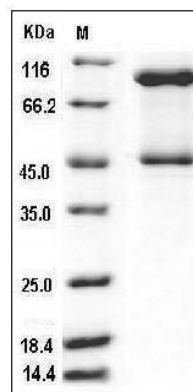
### Storage

Store it under sterile conditions at  $-20^{\circ}\text{C}$  to  $-80^{\circ}\text{C}$ . It is recommended that the protein be aliquoted for optimal storage. Avoid repeated freeze-thaw cycles.

### Reconstitution

Adding sterile water, prepare a stock solution of 0.25 mg/ml. Concentration is measured by UV-Vis.

### SDS-PAGE



Mouse Serpinb3c Protein (His Tag) SDS-PAGE