

# Anti-PHF1 antibody



Catalog Number: 141340

## Product name

Anti-PHF1 antibody

## Specificity

Human PHF1

## Antibody description

Rabbit Polyclonal to Human PHF1

## Preparation

Produced in rabbits immunized with a synthetic peptide corresponding to the center region of the Human PHF1, and purified by antigen affinity chromatography.

## Formulation

0.2  $\mu$ m filtered solution in PBS

## Storage

This antibody can be stored at 2°C-8°C for one month without detectable loss of activity. Antibody products are stable for twelve months from date of receipt when stored at -20°C to -80°C.

Preservative-Free.

Sodium azide is recommended to avoid contamination (final concentration 0.05%-0.1%). It is toxic to cells and should be disposed of properly. Avoid repeated freeze-thaw cycles.

## Clonality

Polyclonal

## Ig Type

Rabbit IgG

## Applications

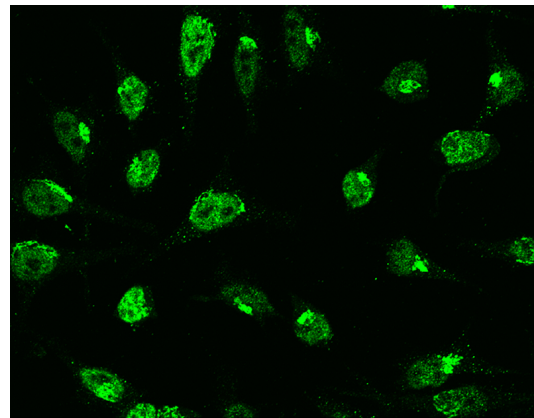
WB, ICC/IF, IF

## Dilutions

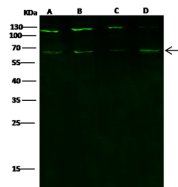
WB: 5-20  $\mu$ g/ml

ICC/IF: 0.5-3  $\mu$ g/mL

## Validations



Human PHF1 Immunofluorescence(IF) 15141



Items	Lanes	A	B	C	D
Sample (whole cell lysate)		Jurkat	MCF7	NCI-H1299	A431
Sample Volume ( $\mu$ g/lane)		30	30	30	30
Gel	13% SDS-PAGE reducing gel				
Recommended Concentration	5-20 $\mu$ g/ml				
Secondary Antibody	Dylight 800-labeled Antibody to Rabbit IgG (H+L), at 1:5000 dilution.				
Explanation	Developed using Odyssey imaging system. Predicted band size : 67 kDa Observed band size : 67 kDa Additional bands at : 115 kDa [We are unsure as to the identity of these extra bands.]				

Human PHF1 Western blot (WB) 15140