

EPAC1 antibody



Catalog Number: 110340

Product name

EPAC1 antibody

Recommended Dilution:

WB: 1:500-1:5000

Specificity

Human, Mouse, Rat, hamster; other species not tested.

IP: 1:200-1:2000

IHC: 1:20-1:200

IF: 1:10-1:100

Antibody description

EPAC1 Rabbit Polyclonal antibody. Positive IP detected in mouse kidney tissue. Positive WB detected in CHO cells. Positive IHC detected in human kidney tissue, human heart tissue, human skeletal muscle tissue, human thyroid tissue. Positive IF detected in A431 cells. Observed molecular weight by Western-blot: 104 kDa

Preparation

This antibody was obtained by immunization of EPAC1 recombinant protein (Accession Number: NM_001098531). Purification method: Antigen affinity purified.

Formulation

PBS with 0.1% sodium azide and 50% glycerol pH 7.3.

Storage

Store at -20°C. DO NOT ALIQUOT

Clonality

Polyclonal

Ig Type

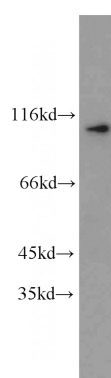
Rabbit IgG

Applications

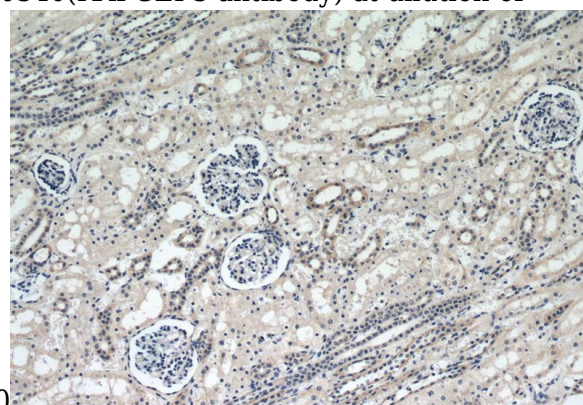
ELISA, WB, IHC, IF, IP

Dilutions

Validations



CHO cells were subjected to SDS PAGE followed by western blot with Catalog No:110340(RAPGEF3 antibody) at dilution of

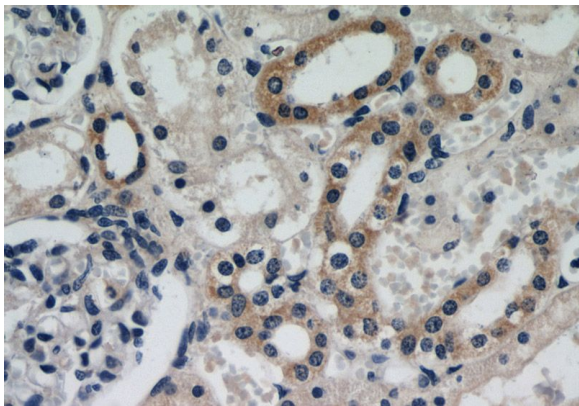


Immunohistochemical of paraffin-embedded human kidney using Catalog No:110340(RAPGEF3 antibody) at dilution of 1:50 (under 10x lens)

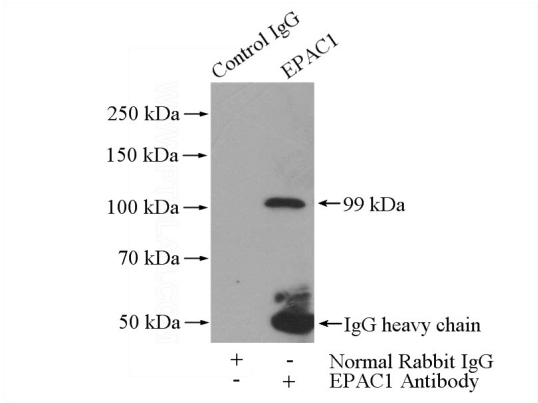
EPAC1 antibody



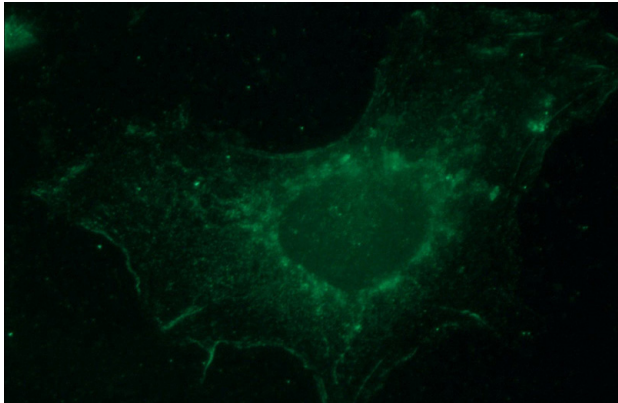
Catalog Number: 110340



Immunohistochemical of paraffin-embedded human kidney using Catalog No:110340(RAPGEF3 antibody) at dilution of 1:50 (under 40x lens)



IP Result of anti-RAPGEF3 (IP:Catalog No:110340, 4ug; Detection:Catalog No:110340 1:600) with mouse kidney tissue lysate 4800ug.



Immunofluorescent analysis of A431 cells using Catalog No:110340(RAPGEF3 Antibody) at dilution of 1:25 and FITC-Goat anti-Rabbit IgG