

# Anti-Ezrin Rabbit antibody



Catalog Number: 167640

## Product name

Anti-Ezrin Rabbit antibody

## Specificity

Human

## Antibody description

Ezrin Rabbit monoclonal antibody

## Preparation

Antigen: A synthetic peptide of human Ezrin

## Formulation

50nM Tris-Glycine(pH 7.4), 0.15M NaCl,  
40%Glycerol, 0.01% sodium azide and 0.05% BSA

## Storage

Store at 4°C short term. Store at -20°C long term.  
Avoid freeze / thaw cycle.

## Clonality

Monoclonal

## Ig Type

Rabbit IgG

## Applications

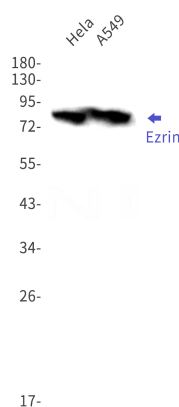
WB, IHC-P

## Dilutions

WB: 1/2000-1/10000

IHC: 1/50

## Validations



Western blot detection of Ezrin in HeLa,A549 cell lysates using Ezrin Rabbit mAb(1:1000 diluted).Predicted band size:69kDa.Observed band size:80kDa.