

SPPL2A antibody

Catalog Number: 115640

Product name

SPPL2A antibody

Specificity

Human, Mouse, Rat; other species not tested.

Antibody description

SPPL2A Rabbit Polyclonal antibody. Positive IHC detected in human testis tissue, human kidney tissue. Positive WB detected in human colon tissue, Jurkat cells, mouse colon tissue. Observed molecular weight by Western-blot: 58kd

Preparation

This antibody was obtained by immunization of SPPL2A recombinant protein (Accession Number: NM_032802). Purification method: Antigen affinity purified.

Formulation

PBS with 0.02% sodium azide and 50% glycerol pH 7.3.

Storage

Store at -20°C. DO NOT ALIQUOT

Clonality

Polyclonal

Ig Type

Rabbit IgG

Applications

ELISA, WB, IHC

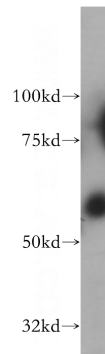
Dilutions

Recommended Dilution:

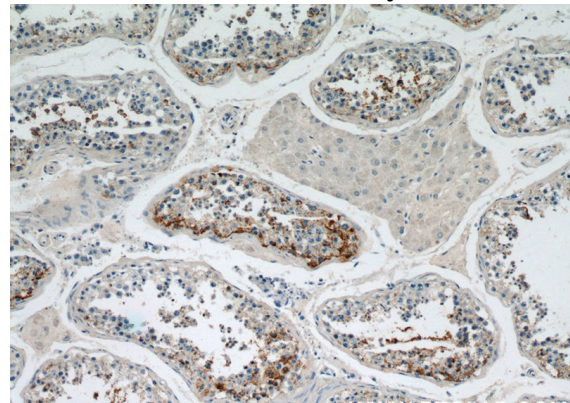
WB: 1:200-1:2000

IHC: 1:20-1:200

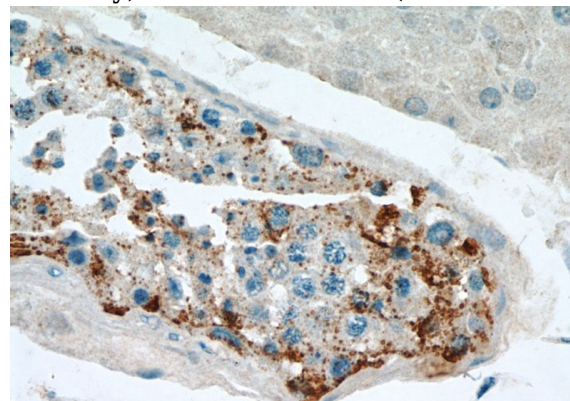
Validations



human colon tissue were subjected to SDS PAGE followed by western blot with Catalog No:115640(SPPL2A antibody) at dilution of 1:500



Immunohistochemical of paraffin-embedded human testis using Catalog No:115640(SPPL2A antibody) at dilution of 1:50 (under 10x lens)



Immunohistochemical of paraffin-embedded human testis using Catalog No:115640(SPPL2A antibody) at dilution of 1:50 (under 40x lens)