

# MEIS2 antibody



Catalog Number: 112640

## Product name

MEIS2 antibody

## Specificity

Human, Mouse, Rat; other species not tested.

## Antibody description

MEIS2 Rabbit Polyclonal antibody. Positive WB detected in Jurkat cells, PC-3 cells. Positive IHC detected in human prostate cancer tissue. Observed molecular weight by Western-blot: 56kd

## Preparation

This antibody was obtained by immunization of MEIS2 recombinant protein (Accession Number: NM\_002399). Purification method: Antigen affinity purified.

## Formulation

PBS with 0.1% sodium azide and 50% glycerol pH 7.3.

## Storage

Store at -20°C. DO NOT ALIQUOT

## Clonality

Polyclonal

## Ig Type

Rabbit IgG

## Applications

ELISA, IHC, WB

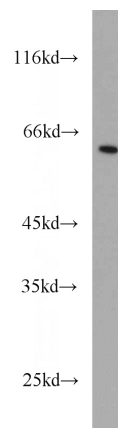
## Dilutions

Recommended Dilution:

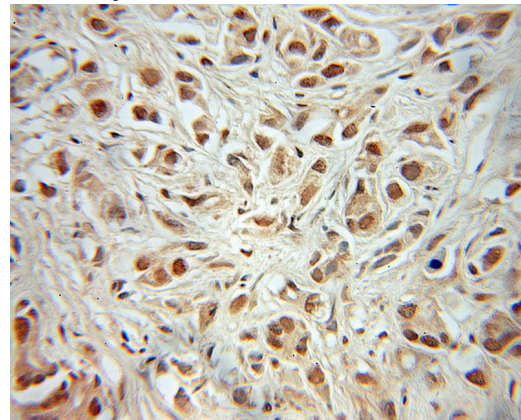
WB: 1:200-1:2000

IHC: 1:20-1:200

## Validations



Jurkat cells were subjected to SDS PAGE followed by western blot with Catalog No:112640(MEIS2 antibody) at dilution of 1:500



Immunohistochemical of paraffin-embedded human prostate cancer using Catalog No:112640(MEIS2 antibody) at dilution of 1:50 (under 10x lens)