

Choline kinase alpha antibody



Catalog Number: 109240

Product name

Choline kinase alpha antibody

IP: 1:200-1:2000

IHC: 1:20-1:200

Specificity

Human, Mouse, Rat; other species not tested.

Antibody description

Choline kinase alpha Rabbit Polyclonal antibody. Positive IHC detected in human liver tissue. Positive WB detected in COLO 320 cells, mouse colon tissue. Positive IP detected in mouse spleen tissue. Observed molecular weight by Western-blot: 50 kDa, 52 kDa

Preparation

This antibody was obtained by immunization of Choline kinase alpha recombinant protein (Accession Number: NM_212469). Purification method: Antigen affinity purified.

Formulation

PBS with 0.02% sodium azide and 50% glycerol pH 7.3.

Storage

Store at -20°C. DO NOT ALIQUOT

Clonality

Polyclonal

Ig Type

Rabbit IgG

Applications

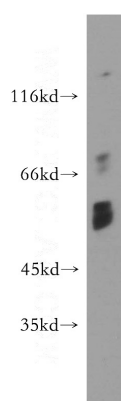
ELISA, WB, IHC, IP

Dilutions

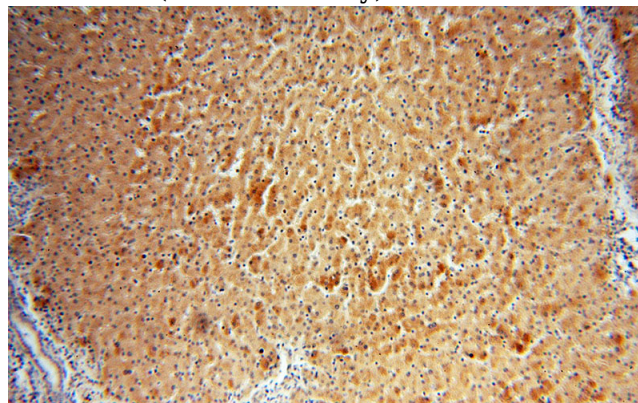
Recommended Dilution:

WB: 1:200-1:2000

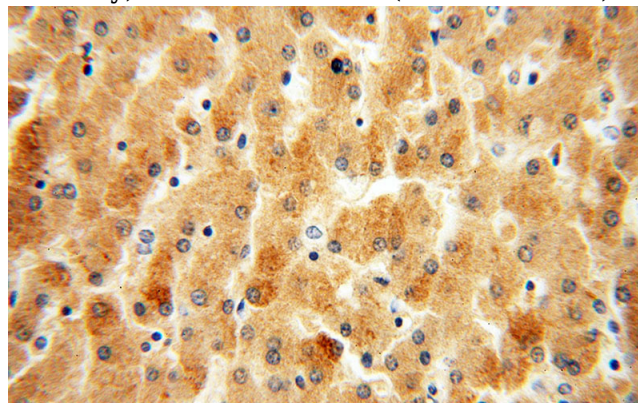
Validations



COLO 320 cells were subjected to SDS PAGE followed by western blot with Catalog No:109240(CHKA antibody) at dilution of 1:300



Immunohistochemical of paraffin-embedded human liver using Catalog No:109240(CHKA antibody) at dilution of 1:50 (under 10x lens)

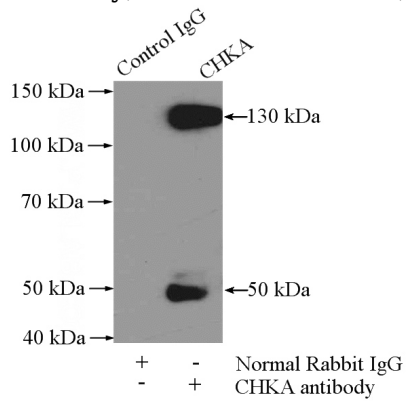


Immunohistochemical of paraffin-embedded human liver using Catalog No:109240(CHKA

Choline kinase alpha antibody

Catalog Number: 109240

antibody) at dilution of 1:50 (under 40x lens)



IP Result of anti-CHKA (IP:Catalog No:109240, 4ug; Detection:Catalog No:109240 1:500) with mouse spleen tissue lysate 4000ug.